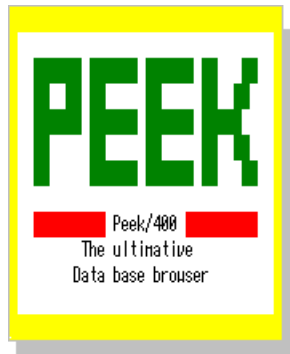


# ***Peek/400***

---

**Version 3.5.4**

## **User´s Manual**



**Produced by:** Thomas Raddatz  
**e-mail:** thomas.raddatz@tools400.de  
**Homepage:** <http://www.tools400.de>  
**Release:** 12.04.2019  
© 1997-2019 Thomas Raddatz

## Summary

|          |  |           |
|----------|--|-----------|
| <b>1</b> | <b>Peek/400, Why?</b> .....                                  | <b>6</b>  |
| <b>2</b> | <b>Features And Restrictions</b> .....                       | <b>7</b>  |
| <b>3</b> | <b>Download</b> .....  | <b>9</b>  |
| <b>4</b> | <b>License</b> .....   | <b>10</b> |
| 4.1      | Registration .....   | 10        |
| 4.2      | Guarantee .....  | 10        |
| <b>5</b> | <b>New Features Of Version 3.5.4</b> .....                   | <b>11</b> |
| <b>6</b> | <b>Installation</b> .....                                    | <b>12</b> |
| 6.1      | Overview .....   | 12        |
| 6.2      | Update Of A New Version .....                                | 13        |
| 6.3      | Roadmap.....   | 13        |
| 6.3.1    | <i>Preparing The Installation:</i> .....                     | 13        |
| 6.3.2    | <i>Finishing the Installation:</i> .....                     | 14        |
| 6.4      | Change Command Language.....                                 | 14        |
| <b>7</b> | <b>QuickStart</b> .....                                      | <b>15</b> |
| <b>8</b> | <b>Main Screen Of Peek/400</b> .....                         | <b>17</b> |
| <b>9</b> | <b>Functions Reference</b> .....                             | <b>19</b> |
| 9.1      | What You Should Know.....                                    | 19        |
| 9.2      | Subfile Options .....  | 19        |
| 9.2.1    | <i>Pin-Record</i> .....                                      | 19        |
| 9.2.2    | <i>UnPin-Records</i> .....                                   | 20        |
| 9.2.3    | <i>Change Record</i> .....                                   | 20        |
| 9.2.4    | <i>Copy Record</i> .....                                     | 20        |
| 9.2.5    | <i>Delete Record</i> .....                                   | 21        |
| 9.2.6    | <i>Display Record</i> .....                                  | 21        |
| 9.2.7    | <i>Copy Record Extern</i> .....                              | 21        |
| 9.2.8    | <i>Move Screen To The Left By One Field</i> .....            | 22        |
| 9.2.9    | <i>Move Screen To The Right By One Field</i> .....           | 23        |
| 9.2.10   | <i>Activation Of The SPLASH-Screen</i> .....                 | 23        |
| 9.2.11   | <i>Deactivation Of The SPLASH-Screen</i> .....               | 23        |
| 9.2.12   | <i>Move Record to Top</i> .....                              | 24        |
| 9.2.13   | <i>Rebuild Program</i> .....                                 | 24        |
| 9.2.14   | <i>Move Screen To The Next Marked Column</i> .....           | 24        |
| 9.2.15   | <i>Move Screen To The Previous Marked Column</i> .....       | 25        |
| 9.2.16   | <i>Select records access by key sequence</i> .....           | 25        |
| 9.2.17   | <i>Select records access by record number sequence</i> ..... | 25        |
| 9.2.18   | <i>„About“</i> .....   | 26        |

---

|           |                                     |           |
|-----------|-------------------------------------|-----------|
| 9.2.19    | <i>Hex Display Mode</i>             | 26        |
| 9.2.20    | <i>Normal Display Mode</i>          | 27        |
| 9.2.21    | <i>Colours</i>                      | 27        |
| 9.2.22    | <i>Save Environment</i>             | 28        |
| 9.2.23    | <i>Load Environment</i>             | 29        |
| 9.2.24    | <i>Delete Environment</i>           | 29        |
| 9.3       | <b>Function Keys</b>                | 30        |
| 9.3.1     | <i>SQL-SELECTION</i>                | 30        |
| 9.3.2     | <i>Pin-Column</i>                   | 31        |
| 9.3.3     | <i>UnPin-Column</i>                 | 32        |
| 9.3.4     | <i>Exit</i>                         | 32        |
| 9.3.5     | <i>Prompt</i>                       | 32        |
| 9.3.6     | <i>Refresh</i>                      | 32        |
| 9.3.7     | <i>Insert Record</i>                | 33        |
| 9.3.8     | <i>Toggle Headline</i>              | 33        |
| 9.3.9     | <i>Mark Column</i>                  | 33        |
| 9.3.10    | <i>Release Mark Column</i>          | 33        |
| 9.3.11    | <i>Display Database Relations</i>   | 34        |
| 9.3.12    | <i>Position Cursor</i>              | 34        |
| 9.3.13    | <i>Change Layout</i>                | 35        |
| 9.3.14    | <i>Repeat Option</i>                | 36        |
| 9.3.15    | <i>Enable Multi Colour Lines</i>    | 36        |
| 9.3.16    | <i>Disable Multi Colour Lines</i>   | 37        |
| 9.3.17    | <i>Extended column pin function</i> | 37        |
| 9.3.18    | <i>Search Engine</i>                | 37        |
| 9.3.19    | <i>Top Of File</i>                  | 40        |
| 9.3.20    | <i>End Of File</i>                  | 40        |
| 9.3.21    | <i>Move Screen To The Left</i>      | 40        |
| 9.3.22    | <i>Move Screen To The Right</i>     | 40        |
| 9.3.23    | <i>Command Line</i>                 | 41        |
| 9.3.24    | <i>80/132 Display Mode</i>          | 41        |
| 9.3.25    | <i>More Options</i>                 | 41        |
| 9.3.26    | <i>More Keys</i>                    | 41        |
| 9.4       | <b>Other Functions</b>              | 41        |
| 9.4.1     | <i>Prompt</i>                       | 41        |
| 9.4.2     | <i>Short Command</i>                | 42        |
| <b>10</b> | <b>Hex-Editor</b>                   | <b>44</b> |
| <b>11</b> | <b>Text-Editor</b>                  | <b>45</b> |
| <b>12</b> | <b>Keys and Options</b>             | <b>46</b> |

|            |   |    |
|------------|---|----|
| 12.1       | Introduction.....                               | 46 |
| 12.2       | Example .....                                   | 46 |
| 12.2.1     | <i>Redefine of a key mapping.....</i>           | 46 |
| 12.2.2     | <i>Redefine a key to an option.....</i>         | 47 |
| 12.2.3     | <i>Define two choices for one function.....</i> | 47 |
| 12.3       | Available functions of Peek/400.....            | 47 |
| 12.3.1     | Main Program Of <b>Peek/400</b> , *PEEK05.....  | 47 |
| 12.3.2     | Select Record Format, *PEEK12.....              | 49 |
| 12.3.3     | Display Record, *PEEK14.....                    | 49 |
| 12.3.4     | Search Engine, *PEEK17.....                     | 49 |
| 12.3.5     | Colour, *PEEK24.....                            | 50 |
| 12.3.6     | Select Colour, *PEEK25.....                     | 50 |
| 12.3.7     | Target File, *PEEK26.....                       | 50 |
| 12.3.8     | Layout, *PEEK34.....                            | 50 |
| 12.3.9     | Prompt/Autoprompt: Fieldname, *PEEK37.....      | 51 |
| 12.3.10    | Display Database Relations, *PEEK40.....        | 51 |
| 12.3.11    | Hex-Editor, *PEEK45.....                        | 52 |
| 12.3.12    | Prompt: Select Member, *PEEK47.....             | 52 |
| 12.3.13    | SQL Selection, *PEEK48.....                     | 52 |
| 12.3.14    | About, *PEEK49.....                             | 53 |
| 12.3.15    | Pin-Columns (Dialog), *PEEK50.....              | 53 |
| 12.3.16    | Create Program, *PEEK52.....                    | 53 |
| 12.3.17    | Select Environment, *PEEK56.....                | 54 |
| 12.3.18    | Delete Environment, *PEEK57.....                | 54 |
| 12.3.19    | Message box, *PEEK59.....                       | 54 |
| 12.3.20    | Text-Editor, *PEEK64.....                       | 54 |
| 12.3.21    | Prompt: Select Subfile Option, *PEEK68.....     | 55 |
| 12.3.22    | Prompt: Select File, *PEEK69.....               | 55 |
| 12.3.23    | Update Programs, *Pxxxxxxxx.....                | 56 |
| 12.3.24    | Peek/400 Control Keys, *PGM.....                | 57 |
| 12.3.24.1  | *ACCESSKEY (SET0003).....                       | 57 |
| 12.3.24.2  | *CVTCHR (SET0006).....                          | 57 |
| 12.3.24.3  | *CRTPGM (SET0012).....                          | 57 |
| 12.3.24.4  | *DSPATR (SET0001).....                          | 58 |
| 12.3.24.5  | *DFTDSPMDE (SET0011).....                       | 58 |
| 12.3.24.6  | *ENVFILE (SET0015).....                         | 59 |
| 12.3.24.7  | *FLOATKEYS (SET0009).....                       | 59 |
| 12.3.24.8  | *LANGUAGE (SET0004).....                        | 59 |
| 12.3.24.9  | *PROMPT (SET0008).....                          | 59 |
| 12.3.24.10 | *PRVFILE (SET0014).....                         | 60 |

- 12.3.24.11 \*SCROLL (SET0010) ..... 60
- 12.3.24.12 \*SEARCH (SET0002) ..... 60
- 12.3.24.13 \*SECATRDFT (SET0013) ..... 61
- 12.3.24.14 \*SPLASH (SET0005) ..... 61
- 12.3.24.15 \*VERSION (SET0007) ..... 61
- 13 Tips & Tricks..... 62**
- 13.1 Peek/400 and end-user!? ..... 62
- 13.2 Create Your Own Default Keyboard Mapping ..... 64
- 13.3 Your Own Language for Peek/400 ..... 64
- 14 EXIT-Programs ..... 66**
- 14.1 User's Authority (EXIT01) ..... 66
- 15 Help me!..... 67**
- 16 History..... 68**

## 1 Peek/400, Why?

**Peek/400** offers some special features that you will not find within other browsers and it is cheap.

Give it a go if you need one or more of the following features:

- Use Commit and Rollback
- Make use of the dedicated activation group for **Peek/400**
- Have a quick overlook due to the subfile representation of the records
- Use the 80/132-character mode representation
- Make use of the pin-function for columns  
(„Pin“ your columns at the left edge of the screen)
- Make use of the pin-function for rows  
(„Pin“ your rows at the top of the subfile)
- Use its powerful search engine
- Assign the commands of **Peek/400** to your own keys
- Define your own language, German and English user interface  
(Create your own language definition file)
- Have a look at records containing characters below x'40' or equal x'FF'  
(But be sure that you will not be able to edit them just with the hex-editor!)
- Hex-Editor for fields  
(Edit fields with characters below x'40' or equal x'FF' with the hex-editor!)
- SQL selection and sorting of records by WHERE and ORDER BY  
(In addition to the classic access methods: by key and by record sequence)

## **2 Features And Restrictions**

The following field types are supported:

- alpha-numeric fields
- binary fields
- packed fields
- zoned fields
- date fields
- time fields
- timestamp fields

The following field type have not been tested yet:

- DBCS-Either
- DBCS-Only
- DBCS-Open

The following field type are not supported:

- floating-Point
- graphic data without CCSID
- hexadecimal
- unknown fields

If you intend to use all of the features of **Peek/400** you must have a RPG compiler installed on your AS/400. Without the compiler there is no chance for **Peek/400** to generate the programs needed for update, insert and copy operations.

Without the compiler you will not be able to make use of the following features of **Peek/400**:

- insert records
- change records
- copy records within the same file



### **3 Download**

**Peek/400** is provided in as a single version that can be run in a CISC or RISC environment running OS/400 V5R2M0 or higher.

If you have a RISC environment **Peek/400** will be converted to RISC by the operating system without any interaction from you.

## **4 License**

### **4.1 Registration**

Dies program is Freeware. There is no registration necessary.

### **4.2 Guarantee**

Although we try to avoid any mistakes within **Peek/400** it is not possible to develop a software without any mistakes. Therefore it may be that there will be an error left within **Peek/400**.

We can not guarantee that **Peek/400** will do its work within any environment and on every AS/400.

**Peek/400** is supplied as it is. We assumes no liability for damages, direct or consequential, which may result from use of **Peek/400**

We recommend to test **Peek/400** with uncritical data before accessing critical data!

We appreciate any error reports but we can not guarantee that all errors will be fixed.

## **5 New Features Of Version 3.5.4**

The following new features have been implemented within V3.4.0:



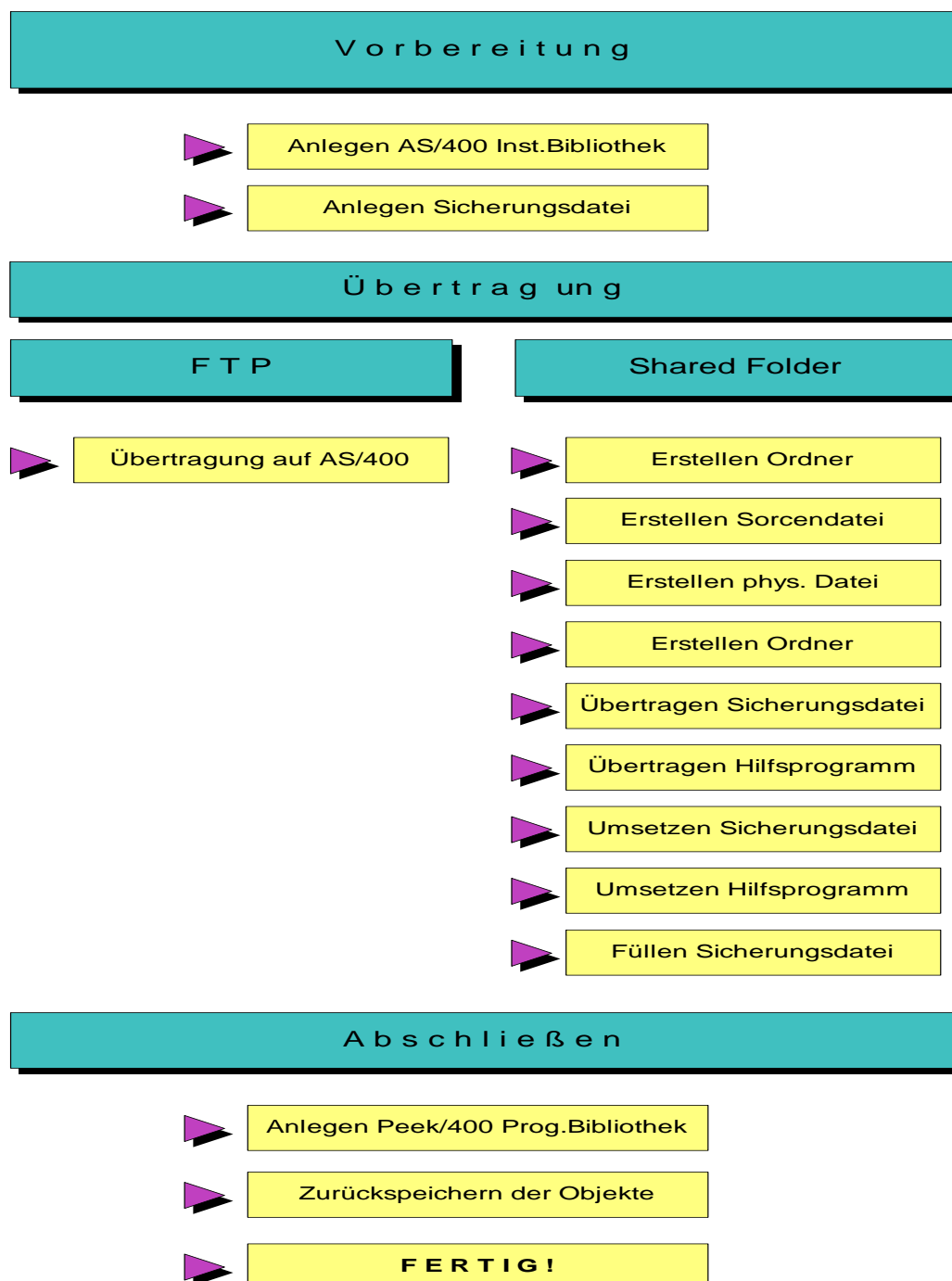
- Fixed problem when creating the settings file for a new user. Now the new settings file properly contains the required records.



- Updated Italian translation by Marco Riva

## 6 Installation

### 6.1 Overview



(Screen: Installation of *Peek/400*)

## 6.2 Update Of A New Version

If you are going to restore an update of **Peek/400** we recommend to rename the old program library of **Peek/400** before restoring the new one. This will ensure that all of the update programs will be rebuild by **Peek/400**.



If you did any changes to the configuration files of **Peek/400**, e.g. PEEKSRC or PEEKUSR or EXIT01PF, these changes will be lost, then. You should verify the new configuration files and add your changes again.

## 6.3 Roadmap

The installation of **Peek/400** is not very complicated if you just follow the roadmap step by step. It is even much more easier if you have TPC/IP installed on your AS/400.

Follow the roadmap:

### 6.3.1 Preparing The Installation:

- Create a library **PEEKINST** on your AS/400 system.

```
CRTLIB          LIB(PEEKINST)
```

- Create a save file **PEEK** placed into the library **PEEKINST**.

```
CRTSAVF        FILE(PEEKINST/PEEK)
```

- Send the save file from your PC to your AS/400.

```
binary
put peek354.sav peekinst/peek           (sending from the PC to the AS/400)
```

or

```
binary
get peek354.sav peekinst/peek (replace   (receiving on the AS/400 from the PC)
```



Be sure to transfer the file having the binary mode enabled!

### 6.3.2 Finishing the Installation:

- Create a library **PEEK** on your AS/400.

```
CRTLIB          LIB(PEEK)
```

- Restore all objects of **Peek/400**:

```
RSTOBJ          OBJ(*ALL)
                SAVLIB(PEEK)
                DEV(*SAVF)
                OBJTYPE(*ALL)
                SAVF(PEEKINST/PEEK)
                OUTPUT(*PRINT)
```

- Ready! Now you can safely delete library **PEEKINST**.
- We recommend to create a copy of the command **PEEK** into the library QGPL or QUSRSYS:

```
CRTDUPOBJ       OBJ(PEEK)
                FROMLIB(PEEK)
                OBJTYPE(*CMD)
                TOLIB(QGPL)
                NEWOBJ(PEEK)
```

### 6.4 Change Command Language

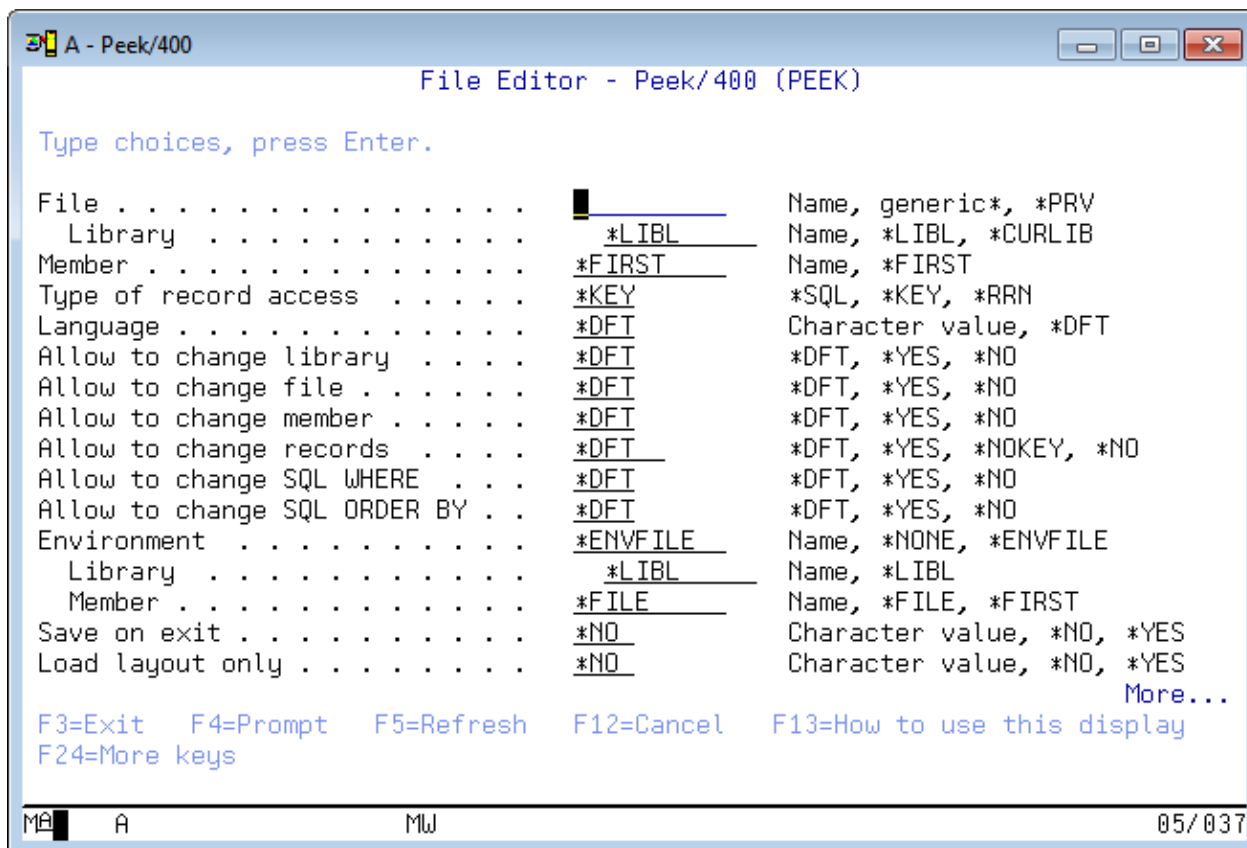
You can recompile commands PEEK and TREE for a language that is supported by Peek. At the moment GER, ENG, SPA, ITA and FRA are the only supported languages.

You should consider recompiling the Peek/400 commands in case most of your users are non German speakers.

```
PEEKINIT        LANGUAGE(GER | ENG | SPA | ITA | FRA)
```

## 7 QuickStart

Peek/400 will be started by entering PEEK at a command line.



(Screen: How to start *Peek/400*)

There are the following key words available:

File: File name and library name of the file to be explored.

Member: Name of the file member

Type of record access:  
 Display by record sequence (= *\*RRN*) or by key sequence (= *\*KEY*)

Language: Language to be used for the user interface.  
 Enter the short cut of the language to be used.

Example: GER is the short cut for the German language and ENG is the short cut for the English language.

Allow to change library:

Allowed to change the library in the main screen of **Peek/400**.

Allow to change file:

Allowed to change the file in the main screen of **Peek/400**.

Allow to change member:

Allowed to change the member in the main screen of **Peek/400**.

Allow to change records:

Allowed to insert, change, delete or copy records.

Allow to change SQL WHERE

Specifies whether or not it is allowed to change the SQL WHERE clause used to select the records to be displayed.

Allow to change SQL ORDER BY

Specifies whether or not it is allowed to change the SQL ORDER BY clause that defines the sort sequence of the records.

Environment:

Environment that should be loaded immediately after program start.

Save on exit:

Specifies whether or not the current environment is saved to the specified environment file and member when the program ends.

Load layout only:

Specifies whether or not to load only the layout from the specified environment file and keep the specified file and member.

User settings:

Specifies which user settings are used. By default the user settings are stored in the Peek/400 product library. The name of the settings file is equal to the name of the user profile that is signed on to the system.

SQL WHERE clause:

Specifies a SQL WHERE clause to select the records that are displayed.

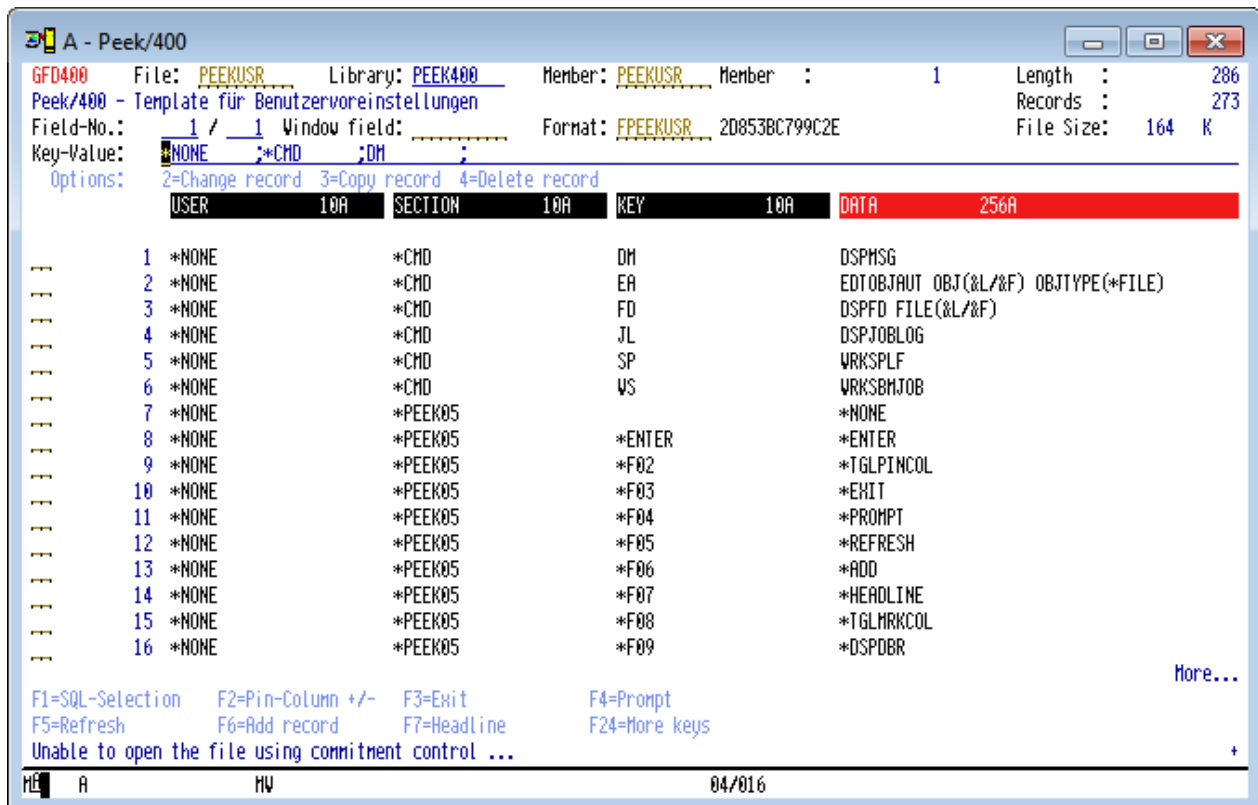
SQL ORDER BY clause:

Specifies a SQL ORDER BY clause to set the sort sequence of the records that are displayed.

The first invocation of **Peek/400** will need a longer time than the next ones due to initialisation stuff that has to be done.



## 8 Main Screen Of Peek/400



(Screen: Main screen of *Peek/400*)

There are the following information available listed from left to right:

- Name of the AS/400-Systems
- File name, library and member of the opened file
- Record length of the opened file
- Object description of the opened file
- Number of active records of the opened file
- Number of the first visible field
- Field where you may enter a name of a field to position the screen
- Name of the record format of the opened file
- Object size of the opened file

There are the following abilities for navigation available:

Enter the number of a field to scroll left and right.

Enter the name of a field to scroll left and right.

Enter the key or a part of the key to scroll up and down.

You have to separate the fields of the key by a blank or the negative sign if there is a need for negative values.

More options and function keys:

Simply have a look at the screen and use F23 and F24 to explore the options for the subfile and the function keys.

## 9 Functions Reference

### 9.1 What You Should Know

Due to the fact that you are able to assign the functions of **Peek/400** to the keys and options of your choice we can not speak of keys and options within this handbook. You may have already changed it!

Therefore it is not possible to say "... by pressing F2 ...".

Instead you will find expressions like that:

„... you are able to refresh the screen by the function „AKTUALISIEREN“ ...“

The default keyboard mapping will be shown as the following examples:

|                          |                 |
|--------------------------|-----------------|
| <i>Function:</i>         | „AKTUALISIEREN“ |
| <i>Default:</i>          | Key „F5“        |
| <i>Program function:</i> | *REFRESH        |

The following phrase “\*TGL” is a substitute for the English verb “to toggle”.

Functions including this prefix are able to switch a function on and off.

You may refer to the functions “ZEILEN PINNEN” (\*PINROW) and “ZEILEN LÖSEN” (\*UNPINROW). The first one pins a row and the second one unpins a row. But instead of them you may also use „UMSCHALTEN ZEILEN PINNEN“ (\*TGLPINROW).

### 9.2 Subfile Options

#### 9.2.1 Pin-Record

This function pins a record at the top of the subfile. Pinned records will not be affected by paging up and down. They stay at the top of the subfile until they are released by the user.

You have to use “ZEILEN LÖSEN” to release a pinned record.

If you refresh the screen your pinned records will be refreshed as well.

|                          |                 |
|--------------------------|-----------------|
| <i>Function:</i>         | „ZEILEN PINNEN“ |
| <i>Default:</i>          | Option „P“      |
| <i>Program function:</i> | *PINROW         |

*Function:* „UMSCHALTEN ZEILEN PINNEN“  
*Default:* \*NONE  
*Program function:* \*TGLPINROW

### 9.2.2 UnPin-Records

This function will release pinned records.

*Function:* „ZEILEN LÖSEN“  
*Default:* Option „U“  
*Program function:* \*UNPINROW\*

*Function:* „UMSCHALTEN ZEILEN PINNEN“  
*Default:* \*NONE  
*Program function:* \*TGLPINROW

*Function:* „ALLE ZEILEN LÖSEN“  
*Default:* \*NONE  
*Program function:* \*CLRPINROW

### 9.2.3 Change Record

This function is to be used to change the contents of a record.

**Peek/400** has to generate a program to perfume this request. The program will be build once after the file format has been changed (level check).

*(The program will be used by the functions KOPIEREN and EINFÜGEN, too.)*

*Function:* „ÄNDERN“  
*Default:* Option „2“  
*Program function:* \*CHANGE

### 9.2.4 Copy Record

This function allows to copy a record within the same file.

**Peek/400** has to generate a program to perfume this request. The program will be build once after the file format has been changed (level check).

*(The program will be used by the functions ÄNDERN and EINFÜGEN, too.)*

*Function:* „KOPIEREN“  
*Default:* Option „3“  
*Program function:* \*COPY

### 9.2.5 Delete Record

This function deletes a record from the file.

There is no special program necessary.

*Function:* „LÖSCHEN“  
*Default:* Option „4“  
*Program function:* \*DELETE

### 9.2.6 Display Record

This function displays a record within a window.

There is no special program necessary.

*Function:* „ANZEIGEN“  
*Default:* Option „5“  
*Program function:* \*DISPLAY

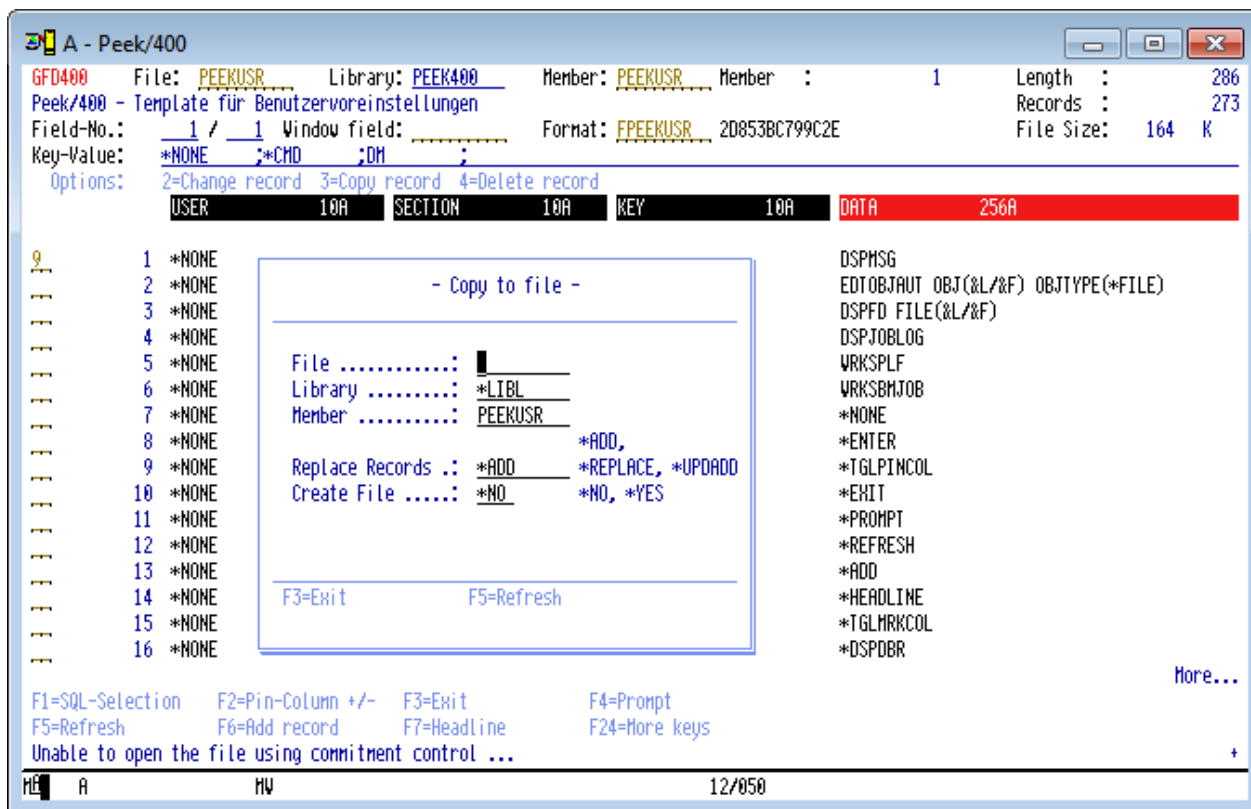
### 9.2.7 Copy Record Extern

This function is to be used to copy a record to an external file.

There is no special program necessary.

*Function:* „EXT.KOPIEREN“  
*Default:* Option „9“  
*Program function:* \*COPYEXT

Before the copy request can be performed you have to enter the target file, first:



(Screen: Copy record extern Peek/400)

**File:**

Name of the target file.

**Library:**

Name of the library holding the target file.  
You may specify \*LIBL if the target file exists.

**Member:**

Name of the member of the target file.

**Replace:**

Whether or not the records within the target file are replaced by the new records.

**Create file:**

Whether or not the target file will be created if it does not yet exist.

**9.2.8 Move Screen To The Left By One Field**

This function moves the screen to the left by one single field.

*Function:* „LINKS“  
*Default:* Option „L“  
*Program function:* \*LEFT



The default keyboard mapping has been changed from F19 to option “L”.

### 9.2.9 Move Screen To The Right By One Field

This function moves the screen to the right by one single field.

*Function:* „RECHTS“  
*Default:* Option „R“  
*Program function:* \*RIGHT

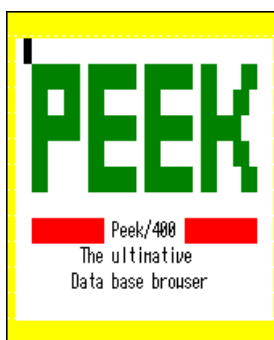


The default keyboard mapping has been changed from F20 to option “R”.

### 9.2.10 Activation Of The SPLASH-Screen

This function enables the splash screen that is been shown at the start of **Peek/400**.

*Function:* „EINSCHALTEN SPLASH SCREEN“  
*Default:* Option „S+“  
*Program function:* \*SPLASHON



(Screen: SPLASH-Screen of **Peek/400**)

### 9.2.11 Deactivation Of The SPLASH-Screen

This function disables the splash screen that is been shown at the start of **Peek/400**.

*Function:* „AUSSCHALTEN SPLASH SCREEN“  
*Default:* Option „S-“  
*Program function:* \*SPLASHOFF



It is not possible to deactivate the splash screen with the shareware licence of **Peek/400**.

### 9.2.12 Move Record to Top

This function moves a record to the top of the subfile.

Records are moved by “Point & Shoot”. Point to the record by the cursor and execute the move record function.

*Function:* „NACH OBEN ZIEHEN“  
*Default:* Key „T“  
*Program function:* \*MOVETOP



The default keyboard mapping of F9 has been changed. You will find the display relations by pressing F9 now.

### 9.2.13 Rebuild Program

This function rebuilds the program that is used for changing, deleting and copying of records.

*Function:* „PROGRAMM ERSTELLEN“  
*Default:* Option „RB“  
*Program function:* \*REBUILD

### 9.2.14 Move Screen To The Next Marked Column

This function moves the screen to the next marked column. It will wrap after the end of the columns has been reached.

*Function:* „NÄCHSTE MARKIERTE SPALTE“  
*Default:* Option „X“  
*Program function:* \*NEXTMARK



You are able to mark columns by using F8 within the default keyboard mapping.



### 9.2.15 Move Screen To The Previous Marked Column

This function moves the screen to the previous marked column. It will wrap after the first of the columns has been reached.

*Function:* „VORHERIGE MARKIERTE SPALTE“  
*Default:* Option „Y“  
*Program function:* \*PREVMARK



You are able to mark columns by using F8 within the default keyboard mapping.

### 9.2.16 Select records access by key sequence

This function selects record access by key sequence.

The new position of the subfile depends on the position of the cursor of the screen at the moment the function was executed:

- If the cursor was placed above the old subfile the new subfile will show the first record of the file as the first record of the new subfile.
- If the cursor was placed below the old subfile the new subfile will show the last record of the file as the last record of the new subfile.
- If the cursor was placed within the pinned records of the old subfile the new subfile will show the first record below the pinned records of the old subfile as the first record of the new subfile below the pinned records.
- If the cursor was placed within the „normal“ records of the old subfile the new subfile will show the record pointed by the cursor as the first record of the new subfile.

*Function:* „SCHLÜSSELFOLGE“  
*Default:* \*NONE  
*Program function:* \*KEY

*Function:* „UMSCHALTEN SORTIERUNG“  
*Default:* Option „S“  
*Program function:* \*TGLACCESS

### 9.2.17 Select records access by record number sequence

This function selects record access by record number sequence.

The new position of the subfile depends on the position of the cursor of the screen at the moment the function was executed:

- If the cursor was placed above the old subfile the new subfile will show the first record of the file as the first record of the new subfile.
- If the cursor was placed below the old subfile the new subfile will show the last record of the file as the last record of the new subfile.
- If the cursor was placed within the pinned records of the old subfile the new subfile will show the first record below the pinned records of the old subfile as the first record of the new subfile below the pinned records.
- If the cursor was placed within the „normal“ records of the old subfile the new subfile will show the record pointed by the cursor as the first record of the new subfile.

*Function:* „SATZFOLGE“  
*Default:* \*NONE  
*Program function:* \*RRN

*Function:* „UMSCHALTEN SORTIERUNG“  
*Default:* Option „S“  
*Program function:* \*TGLACCESS

#### 9.2.18 „About“

This function will show up the „About“ screen of **Peek/400**.

The „About“ screen will give you specific information about the version of **Peek/400** and the actual address of the homepage of **Peek/400** in the internet.

*Function:* „ABOUT“  
*Default:* Option „A“  
*Program function:* \*ABOUT

#### 9.2.19 Hex Display Mode

This function switches the main screen of **Peek/400** into hex display mode.

*Function:* „HEX MODUS EIN“  
*Default:* \*NONE  
*Program function:* \*DSPHEX

*Function:* „UMSCHALTEN ANZEIGE MODUS“  
*Default:* Option „H“  
*Program function:* \*TGLDSP

9.2.20 Normal Display Mode

This function switches the main screen of **Peek/400** into normal display mode.

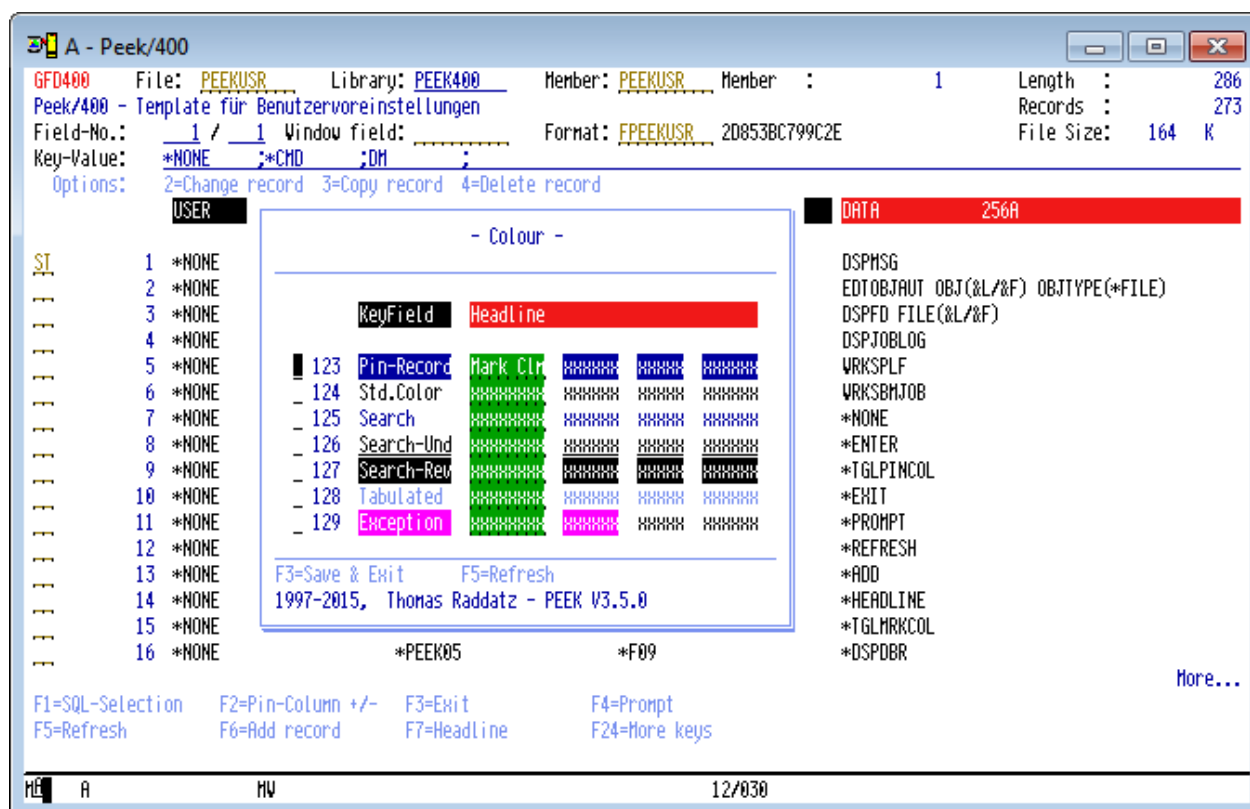
Function: „HEX MODUS AUS“  
 Default: \*NONE  
 Program function: \*DSPNRM

Function: „UMSCHALTEN ANZEIGE MODUS“  
 Default: Option „H“  
 Program function: \*TGLDSP

9.2.21 Colours

This function allows to define your own colours for the main screen of **Peek/400**.

Have a look at the following dialog:



(Screen: Colours of **Peek/400**)

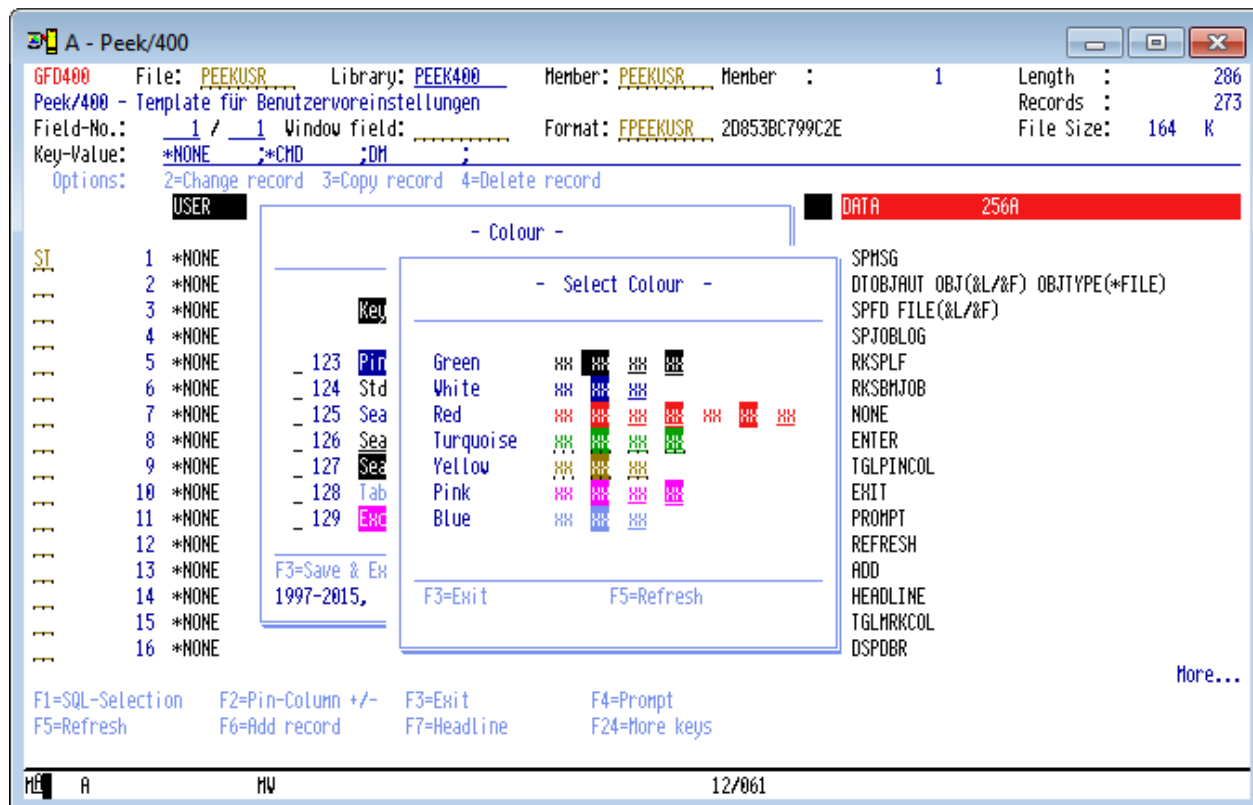
Function: „BENUTZEREINSTELLUNGEN“  
 Default: Option „ST“  
 Program function: \*USERSETG



The default keyboard mapping has been changed from F15 to "ST". F15 has been mapped to the extended column pin function.

Colours are changed by "Point & Shoot". Point to the colour to be changed by the cursor and press ENTER to execute your request.

The following screen will be displayed to select a new colour:



(Screen: Select a new colour for Peek/400)

Save the new settings by „SICHERN & BEENDEN“ or cancel by „ABBRECHEN“.

Function: „SICHERN & BEENDEN“  
 Default: Key „F3“  
 Program function: \*SAVE\_EXIT

Function: „ABBRECHEN“  
 Default: Key „F12“  
 Program function: \*CANCEL

### 9.2.22 Save Environment

This function saves the actual environment to a specified member of your choice.

The properties being saved are:

- Sort sequence
- SQL select/order by
- Pinned rows
- Pinned columns
- Layout of the file

*Function:* „SICHERN ARBEITSUMGEBUNG“  
*Default:* SE  
*Program function:* \*SAVEENV

### 9.2.23 Load Environment

This function loads an environment from a specified member of your choice.

The properties being loaded are:

- Sort sequence
- SQL select/order by
- Pinned rows
- Pinned columns
- Layout of the file

If you are going to load an environment you must be aware of the following restrictions:

- Sort sequence will be restored without restrictions
- Pinned rows are only restored if the file actually open is the same one when the environment had been saved. (Same File, same library)
- In order to restore the remaining properties the filename must match only.

*Function:* „LADEN ARBEITSUMGEBUNG“  
*Default:* LE  
*Program function:* \*LOADENV

### 9.2.24 Delete Environment

This function dedicated to delete an environment.

*Function:* „LÖSCHEN ARBEITSUMGEBUNG“  
*Default:* DE  
*Program function:* \*DELETEENV

### 9.3 Function Keys

#### 9.3.1 SQL-SELECTION

The function „SQL-AUSWAHL“ let you select and order records by SQL.



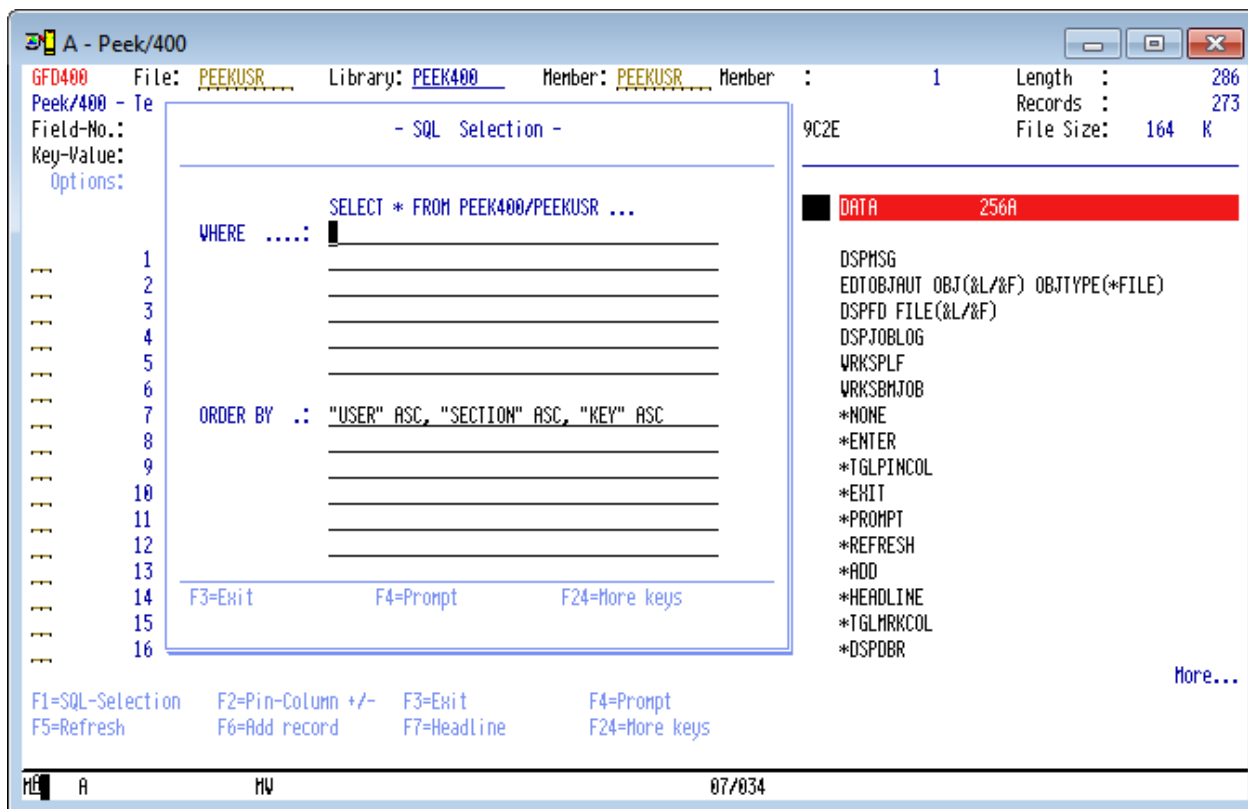
This function is only available in conjunction with physical files!



It is not possible to position the subfile by entering a key value or a record number. All other options and functions will work as before.

*Function:* „SQL-AUSWAHL“  
*Default:* Funktionstaste „F1“  
*Program function:* \*SQL

The dialog looks like this:



(Screen: SQL-Selection of *Peek/400*)

The fields of the current file can be viewed and inserted by „PROMPT“ (\*PROMPT, F4). The selected field will be inserted at the current position of the cursor.

The key fields of the current file can be inserted by „EINFÜGEN SCHLÜSSELFELDER“ (\*INSKEYFLD, F11). The fields will be inserted at the current position of the cursor.

### 9.3.2 Pin-Column

This function pins a column at the left edge of the subfile. The pinned columns will not be affected by scrolling left and right. They stay at the left edge of the subfile until they are released by the user.

Columns are pinned by “Point & Shoot”. Point to the column by the cursor and execute the pin function.

*Function:* „SPALTEN PINNEN“  
*Default:* \*NONE  
*Program function:* \*PINCOL

*Function:* „UMSCHALTEN SPALTEN PINNEN“  
*Default:* Key „F2“  
*Program function:* \*TGLPINCOL

### 9.3.3 UnPin-Column

This function releases pinned columns.

Columns are unpinned by "Point & Shoot". Point to the column by the cursor and execute the unpin function.

*Function:* „SPALTEN LÖSEN“  
*Default:* \*NONE  
*Program function:* \*UNPINCOL

*Function:* „UMSCHALTEN SPALTEN PINNEN“  
*Default:* Key „F2“  
*Program function:* \*TGLPINCOL

*Function:* „ALLE SPALTEN LÖSEN“  
*Default:* \*NONE  
*Program function:* \*CLRPINCOL

### 9.3.4 Exit

This function exits **Peek/400**.

All user settings will be save.

*Function:* „BEENDEN“  
*Default:* Key „F3“  
*Program function:* \*EXIT

### 9.3.5 Prompt

This function shows a field specific dialog in order to select an option.

*Function:* „PROMPT“  
*Default:* Funktionstaste „F4“  
*Program function:* \*PROMPT

### 9.3.6 Refresh

This function refreshes the screen.

*Function:* „AKTUALISIEREN“  
*Default:* Key „F5“  
*Program function:* \*REFRESH



### 9.3.7 Insert Record

This function inserts a record into the opened file.

**Peek/400** has to generate a program to perform this request. The program will be build once after the file format has been changed (level check).

*(The program will be used by the functions ÄNDERN and KOPIEREN, too.)*

*Function:* „EINFÜGEN“  
*Default:* Key „F6“  
*Program function:* \*ADD

### 9.3.8 Toggle Headline

This function toggles the headline to display the fieldname or the column heading of the fields.

*Function:* „ÜBERSCHRIFT“  
*Default:* Key „F7“  
*Program function:* \*HEADLINE

### 9.3.9 Mark Column

This function marks “important” columns by a different colour.

Columns are marked by “Point & Shoot”. Point to the column by the cursor and execute the mark column function.

*Function:* „SPALTEN MARKIEREN“  
*Default:* \*NONE  
*Program function:* \*MRKCOL

*Function:* „UMSCHALTEN SPALTE MARKIEREN“  
*Default:* Key „F8“  
*Program function:* \*TGLMRKCOL

### 9.3.10 Release Mark Column

This function releases marked columns.

Marked Columns are released by “Point & Shoot”. Point to the column by the cursor and execute the release marked column function.

*Function:* „SPALTEN MARKIERUNG AUFHEBEN“  
*Default:* \*NONE  
*Program function:* \*UNMRKCOL

Function: „UMSCHALTEN SPALTE MARKIEREN“  
 Default: Key „F8“  
 Program function: \*TGLMRKCOL

### 9.3.11 Display Database Relations

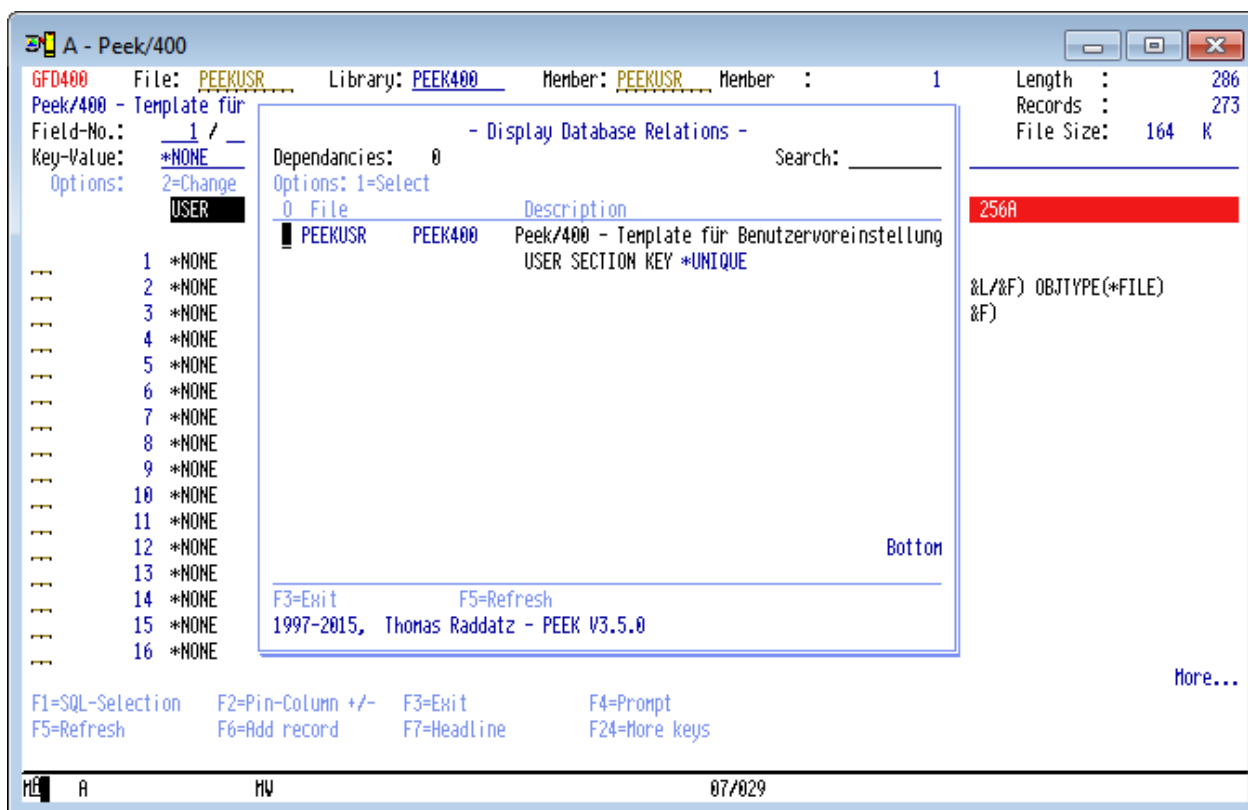
This function displays all database relations of a physical file.

Function: „RELATIONEN ANZEIGEN“  
 Default: Key „F9“  
 Program function: \*DSPDBR



The default keyboard mapping of F9 has been changed. You will find “move to top” by entering option “T” now.

The dialog looks like:



(Screen: Display Database Relations of *Peek/400*)

### 9.3.12 Position Cursor

This function places the cursor into the field to enter the relative record number or the key of the opened file.

*Function:* „CURSOR POSITIONIEREN“  
*Default:* Key „F10“  
*Program function:* \*POSCSR

### 9.3.13 Change Layout

This function provides the ability to change the layout of the subfile. You are able to re-order the fields, to float key fields to top and to define a maximum width of the fields.

*Function:* „LAYOUT“  
*Default:* Key „F11“  
*Program function:* \*LAYOUT

You are able to change the following attributes:

- Order of the fields

Define your own order of the fields.

- Hide a field if it is not of interest to you

Accepted values:

0 = hidden

1 = visible

- Editcode of a numeric field

Assign the editcode of your choice for the representation of a field within the subfile.

- Maximum width of a field

Define a maximum width of a field if its headline is too long.

- Colour of the marked columns

Change the colour of the marked columns function for a single field. You may also make use of the user settings dialog where you can define a global colour for marked columns.

The colour can be changed by entering a character of your choice into the field named “Colour” and pressing ENTER. After that you can select the colour of your choice by “Point & Shoot”, then.

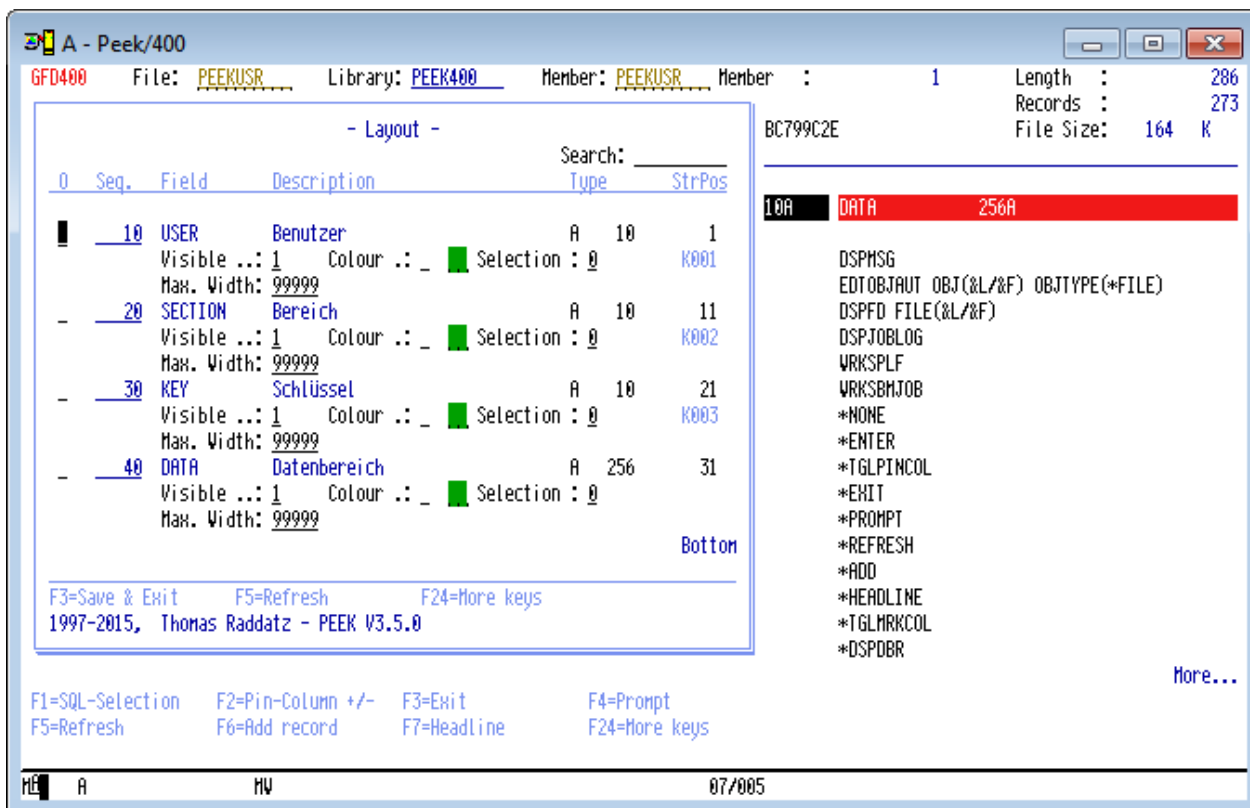
- Mark/Release columns

Define a column as marked or not.

Accepted values are:

- 0 = column is displayed as marked
- 1 = column is not displayed as marked

Have a look at the layout screen:



(Screen: Change layout of *Peek/400*)

You may float the key fields to top by the function „SCHLÜSSEL AN ANFANG SORTIEREN“.

Function: „SCHLÜSSEL AN ANFANG SORTIEREN“  
 Default: Key „F11“  
 Program function: \*FLOATKEYS

### 9.3.14 Repeat Option

This function repeats the option of a subfile record like PDM does.

Function: „WIEDERHOLEN“  
 Default: Key „F13“  
 Program function: \*REPEAT

### 9.3.15 Enable Multi Colour Lines

This function changes the subfile to display the records using alternating colours.

*Function:* „EINSCHALTEN TABELLIERPAPIER“  
*Default:* \*NONE  
*Program function:* \*TBLPAPON

*Function:* „UMSCHALTEN TABELLIERPAPIER“  
*Default:* Key „F14“  
*Program function:* \*TGLTBLPAP

### 9.3.16 Disable Multi Colour Lines

This function changes the subfile to display the records using a single colour.

*Function:* „AUSSCHALTEN TABELLIERPAPIER“  
*Default:* \*NONE  
*Program function:* \*TBLPAPOFF

*Function:* „UMSCHALTEN TABELLIERPAPIER“  
*Default:* Key „F14“  
*Program function:* \*TGLTBLPAP

### 9.3.17 Extended column pin function

With this function you can select columns to be pinned from a subfile screen.

*Function:* „SPATLEN PINNEN DIALOG“  
*Default:* Key „F15“  
*Program function:* \*PINCOLDLG

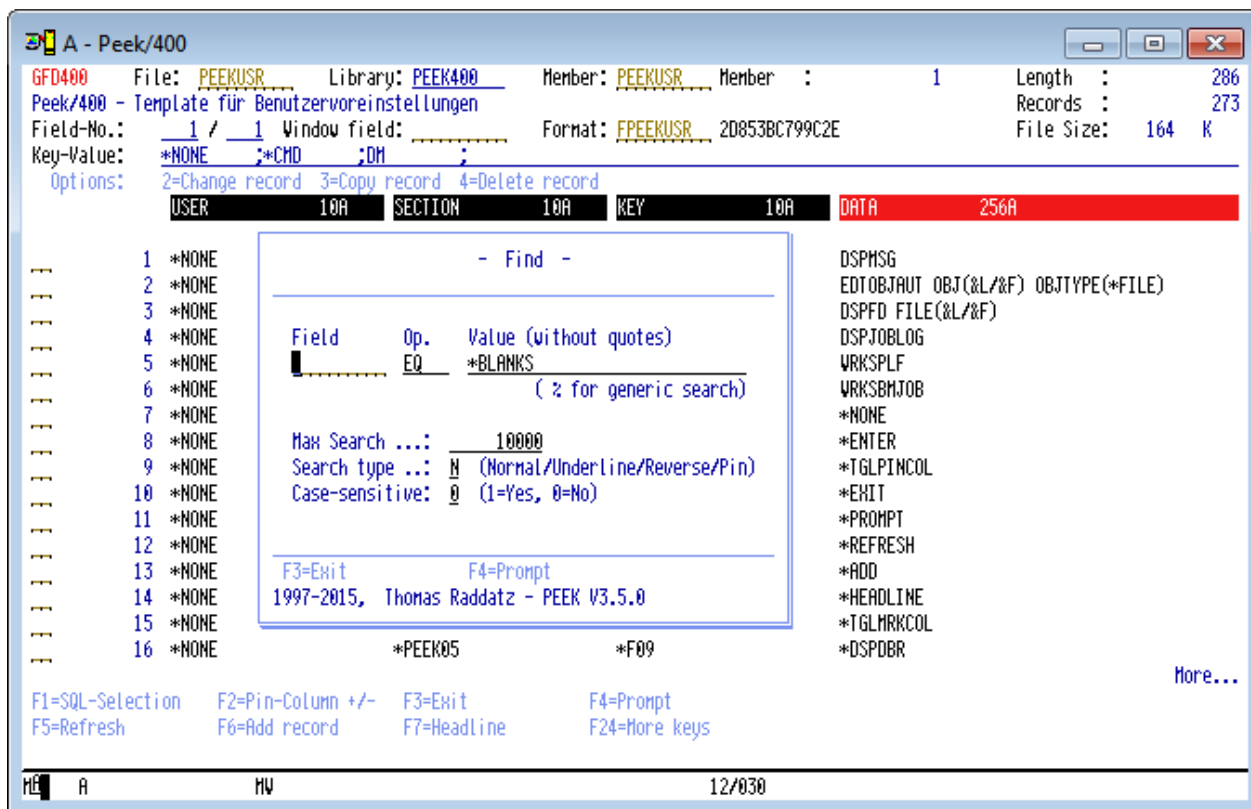


The default keyboard mapping of F15 has been changed. You will find the user settings by option “ST” now.

### 9.3.18 Search Engine

This function allows sequential searching through the records of the opened file.

Have a look at the following screen:



(Screen: Search engine of *Peek/400*)

**Function:** „SUCHEN“  
**Default:** Key „F16“  
**Program function:** \*SEARCH

Field:

The name of the field which contents is to be searched for. Use the special value \*RECORD if you want to search the whole record without the limitations of any fields.

Operand:

The type of the operand for the compare.

Use one of the following operands:

- EQ - Equal
- NE - Not equal
- GT - Greater
- LT - Lower
- GE - Greater/Equal
- LE - Lower/Equal

LIKE - like (*for generic Search*)

NLIKE- not like (*for generic Search*)

If you use \*RECORD *you have to use* LIKE or NLIKE.

Value:

The argument that you are searching for.

There are the following special values available:

\*BLANKS - Searching for blanks

\*ZEROS - Searching for zeros

Max. Nbr. of records:

Due to the sequential search it is recommended to set a limit to the number of records to be scanned for the search argument.

After the maximum number of records have been processed you are able to restart the search by executing the function "SUCHEN" once again.

Type of search:

There are the following type of the search available:

N - Normal Search Mode

After the record has been found it will be placed at the top of the subfile. The next record will be found by executing "SUCHEN" once again.

U - Underlined Search Mode

After the record has been found it will be placed at the top of the subfile. The record and all other records within the window that matches the argument will be shown in underlined mode, too.

R - Reverse Mode

After the record has been found it will be placed at the top of the subfile. The record and all other records within the window that matches the argument will be shown in reversed mode, too.

P - Search & Pin

After the record has been found it will be pinned. The search will continue automatically and it stops after there is no more place for more records or the maximum number of records has been processed.



You are not able to re-define „N, U, R and P“!

### 9.3.19 Top Of File

This function moves the cursor to the top of the file.

*Function:* „DATEIANFANG“  
*Default:* Key „F17“  
*Program function:* \*TOP

### 9.3.20 End Of File

This function moves the cursor to the end of the file.

*Function:* „DATEIENDE“  
*Default:* Key „F18“  
*Program function:* \*BOT

### 9.3.21 Move Screen To The Left

This function moves the screen to the left.

*Function:* „SEITE LINKS“  
*Default:* Key „F19“  
*Program function:* \*PAGELEFT



The default keyboard layout has been changed from \*LEFT to \*PAGELEFT.

### 9.3.22 Move Screen To The Right

This function moves the screen to the right.

*Function:* „SEITE RECHTS“  
*Default:* Key „F20“  
*Program function:* \*PAGERIGHT





The default keyboard layout has been changed from \*RIGHT to \*PAGERIGHT.

### 9.3.23 Command Line

This function provides an OS/400 command line.

*Function:* „BEFEHLSZEILE“  
*Default:* Key „F21“  
*Program function:* \*CMDLINE

### 9.3.24 80/132 Display Mode

This function toggles between 80 character and 132 character screen resolution.

*Function:* „ANZEIGEMODUS“  
*Default:* Key „F22“  
*Program function:* \*132/80

### 9.3.25 More Options

This function displays more available option.

*Function:* „WEITERE AUSWAHLEN“  
*Default:* Key „F23“  
*Program function:* \*MOREOPT

### 9.3.26 More Keys

This function displays more available keys.

*Function:* „WEITERE TASTEN“  
*Default:* Key „F24“  
*Program function:* \*MOREKEYS

## 9.4 Other Functions

### 9.4.1 Prompt

Prompt let you select an option for a field by a subfile dialog if this function is been supported by the field.

Just key in “?” into the field for the fieldname and press ENTER to activate the prompt function.

The following fields supports the prompt function:

- Field name  
(Main screen and search engine)
- Member  
(Main screen)

### 9.4.2 Short Command

Like SEU you can define short commands within **Peek/400**. The short commands that you define can be executet within every subfile option within **Peek/400**.

The short commands are defined in the user’s configuration file of **Peek/400** that is hold in the program library of **Peek/400**.

This is an example of a shipped short command that displays the file description of the currently opened file:

| Benutzer         | Bereich | Schlüssel | Datenbereich     |
|------------------|---------|-----------|------------------|
| <i>user name</i> | *CMD    | FD        | DSPFD FILE(&L&F) |

Benutzer: user name.

Bereich: constant „\*CMD“

Schlüssel: option

Datenbereich: Command with or without replacement variables

You can make use of the following described replacement variables:

| Variable       | Replaced by  |
|----------------|--|
| &L             | the name of the library that holds the currently opened file |
| &F             | the name of the currently opened file                        |
| &N             | the name of the currently opened file member                 |
| &R             | relative record number                                       |
| % + field name | the value of a field of the current record                   |

The names of the replacement variables are inspired by SEU.

Starting with v3.0 you can specify the data type of the '%' field replacement variables. Example:

%FIELDNAME (P, 4, 2)

In the example above the value of %FIELDNAME is passed as a packed 4-digit value with two decimal positions to the called program. The following data types are supported:

|     |                  |
|-----|------------------|
| 'A' | Alpha            |
| 'B' | Binary           |
| 'I' | Integer          |
| 'U' | Unsigned Integer |
| 'P' | Packed           |
| 'S' | Zoned            |

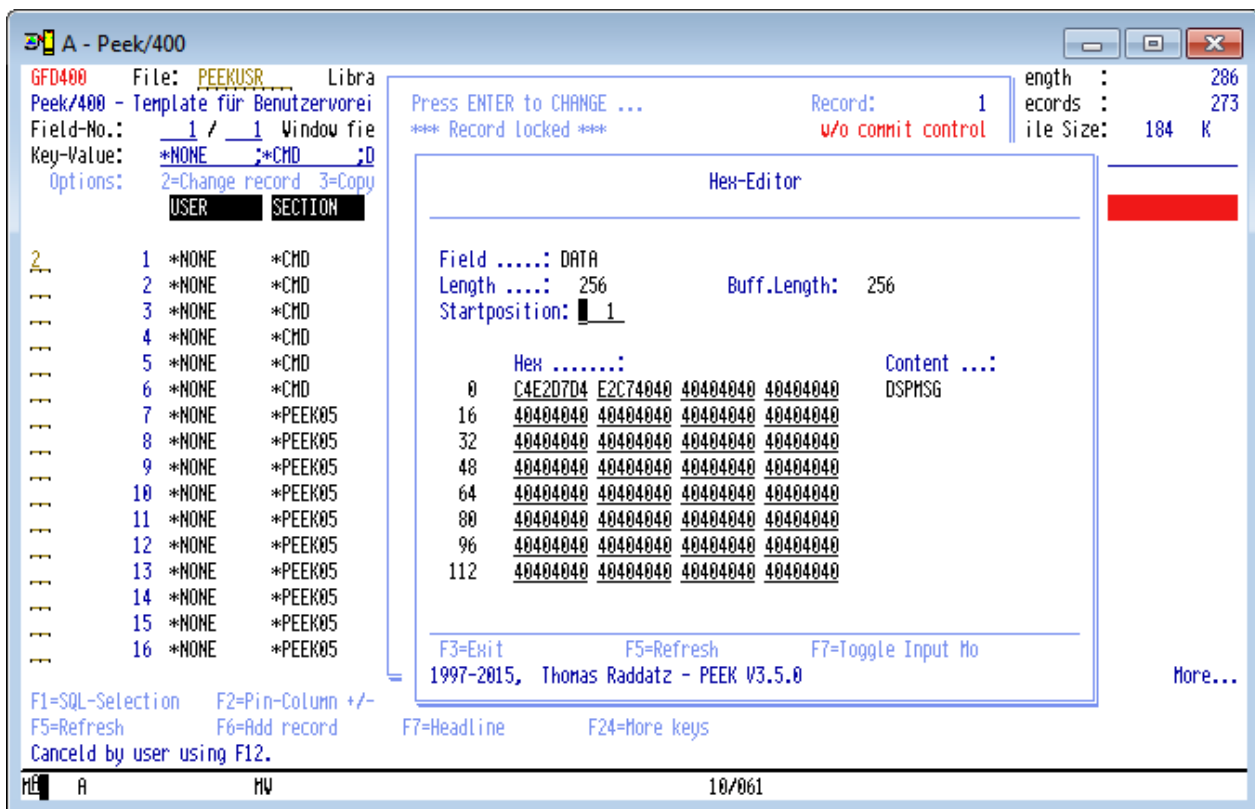
## 10 Hex-Editor

With „HEX-EDIT“ you are able to edit the content of a field in hex mode. This is very usefull if a field contains invalid numerical characters. Usually a field with invalid numerical characters can not be edited. With „HEX- can edit the field!

If you need to hex-edit a field, choose option 2 EDIT“ you in the subfile and press the enter key. This will invoke the „Record Change“ window. By default „HEX-EDIT“ can be activated by pressing F9, then. Point to the field to be edited with the cursor and press F9.

If you want to edit a field with invalid numerical characters you have to point to the string „Unprintable Char“ and press F9, then.

You can move the visible part of your field by entering a new start position into the field „Start position“.

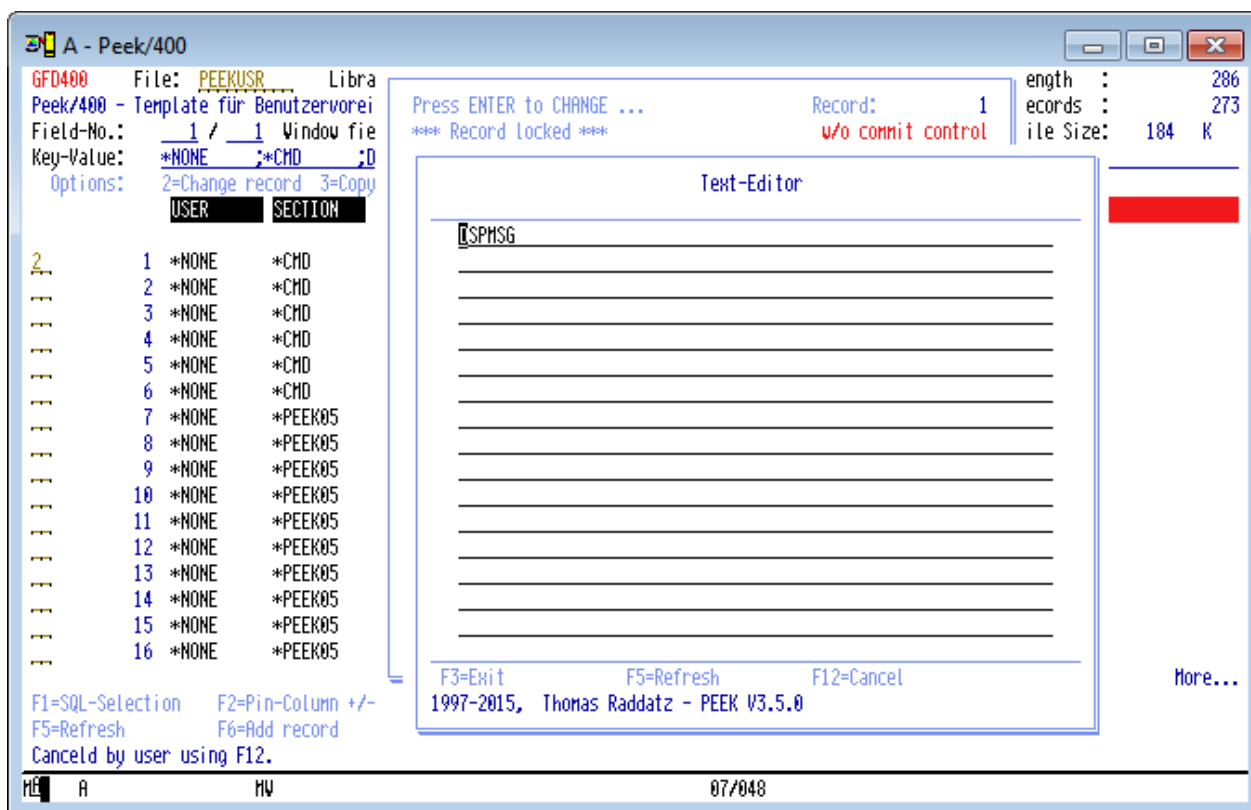


(Screen: Hex-Editor of Peek/400)

## 11 Text-Editor

With „TEXT-EDIT“ you are able to edit the content of a field up to a field length of 1024 byte.

If you need to text-edit a field, choose option 2 EDIT“ you in the subfile and press the enter key. This will invoke the „Record Change“ window. By default „TEXT-EDIT“ can be activated by pressing F10, then. Point to the field you want to edit with the cursor and press F10.



(Screen: Text-Editor of Peek/400)

## 12 Keys and Options

### 12.1 Introduction

The keyboard mapping of the keys and the options can be configured by the user itself. If you do not like the default keyboard mapping just change it as you like, then!

The keyboard mapping is been stored within the **Peek/400** configuration file. The name of the configuration file is like the name of your user profile and it is placed in the **Peek/400** program library.

You may directly edit, insert or even delete these entries.

File format description:

|          |                                      |
|----------|--------------------------------------|
| Benutzer | Name of the user                     |
| Section  | Section where the entry is been used |
| Key      | Key for the entry                    |
| Data     | Data part of the entry               |

### 12.2 Example

Assume that there are the following two entry defined for the use within PEEK05 which is the main program of **Peek/400**.

**Old:**

| <u>Benutzer</u> | <u>Section</u> | <u>Key</u> | <u>Data</u> | <u>Bemerkung</u> |
|-----------------|----------------|------------|-------------|------------------|
| TESTUSER        | *PEEK05        | *F02       | *TGLPINCOL  | Pin-Column       |
| TESTUSER        | *PEEK05        | *F03       | *EXIT       | End program      |

#### 12.2.1 Redefine of a key mapping

Just change „\*F02“ to „\*F06“ and the pin-column function will be executed by pressing F6 instead of pressing F2.

**New:**

| <u>Benutzer</u> | <u>Section</u> | <u>Key</u> | <u>Data</u> | <u>Bemerkung</u> |
|-----------------|----------------|------------|-------------|------------------|
| TESTUSER        | *PEEK05        | *F06       | *TGLPINCOL  | Pin-Column       |
| TESTUSER        | *PEEK05        | *F03       | *EXIT       | End program      |

### 12.2.2 Redefine a key to an option

Simply change „\*F03“ to „X“ and you will be able to exit **Peek/400** by entering “X” instead of pressing F3.

#### **New:**

| Benutzer | Section | Key  | Data       | Bemerkung   |
|----------|---------|------|------------|-------------|
| TESTUSER | *PEEK05 | *F02 | *TGLPINCOL | Pin-Column  |
| TESTUSER | *PEEK05 | X    | *EXIT      | End program |

### 12.2.3 Define two choices for one function

Of course you can define more than one way to execute a function of **Peek/400**. Have a look at the following example:

#### **New:**

| Benutzer | Section | Key  | Data       | Bemerkung        |
|----------|---------|------|------------|------------------|
| TESTUSER | *PEEK05 | *F02 | *TGLPINCOL | Pin-Column       |
| TESTUSER | *PEEK05 | X    | *EXIT      | End program      |
| TESTUSER | *PEEK05 | *F03 | *EXIT      | End program, too |

## 12.3 Available functions of Peek/400

### 12.3.1 Main Program Of Peek/400, \*PEEK05

| Function   | Default | Description                    |
|------------|---------|--------------------------------|
| *NONE      | ' '     | Keine Funktion ausführen       |
| *ENTER     | ENTER   | enter                          |
| *SQL       | F1      | select records by SQL          |
| *TGLPINCOL | F2      | toggle pin-column              |
| *EXIT      | F3      | exit program                   |
| *PROMPT    | F4      | Prompt                         |
| *REFRESH   | F5      | refresh screen                 |
| *ADD       | F6      | insert record                  |
| *HEADLINE  | F7      | toggle headline                |
| *TGLMRKCOL | F8      | toggle marked columns          |
| *DSPDBR    | F9      | display database relations     |
| *POSCSR    | F10     | position cursor                |
| *LAYOUT    | F11     | change layout                  |
| *CANCEL    | F12     | cancel                         |
| *REPEAT    | F13     | repeat option                  |
| *TGLTBLPAP | F14     | toggle multi colour lines      |
| *PINCOLDLG | F15     | pin and unpin columns (dialog) |

|            |      |   |
|------------|------|---|
| *SEARCH    | F16  | search engine                             |
| *TOP       | F17  | goto top of file                          |
| *BOT       | F18  | goto bottom of file                       |
| *PAGELEFT  | F19  | move screen to the left, whole screen     |
| *PAGERIGHT | F20  | move screen to the right, whole screen    |
| *CMDLINE   | F21  | OS/400 command line                       |
| *132/80    | F22  | 80-/132-character resolution              |
| *MOREOPT   | F23  | more options                              |
| *MOREKEYS  | F24  | more keys                                 |
| *PAGEUP    | PgUp | scroll up                                 |
| *PAGEDOWN  | PgDn | scroll down                               |
| *ABOUT     | A    | "About Peek/400"                          |
| *DELETEENV | DE   | Delete Environment                        |
| *TGLDSP    | H    | Toggle display mode hex to normal         |
| *TGLKEYLUC | K    | Toggle Key Mode 'upper case'/'lower case' |
| *LEFT      | L    | move screen to the left, step one field   |
| *LOADENV   | LE   | Load environment                          |
| *PINROW    | P    | pin row                                   |
| *RIGHT     | R    | move screen to the right, step one field  |
| *REBUILD   | RB   | rebuild update program                    |
| *TGLACCESS | S    | Toggle order                              |
| *SPLASHON  | S+   | enable SPLASH-Screen                      |
| *SPLASHOFF | S-   | disable SPLASH-Screen                     |
| *SAVEENV   | SE   | Save environment                          |
| *USERSETG  | ST   | colour preferences                        |
| *MOVETOP   | T    | move record to top                        |
| *UNPINROW  | U    | release pinned row                        |
| *CLRPINCOL | UC   | release all pinned columns                |
| *CLRPINROW | UR   | release all pinned rows                   |
| *NEXTMARK  | X    | scroll right to the next marked column    |
| *PREVMARK  | Y    | scroll left to the previous marked column |
| *CHANGE    | 2    | change record                             |
| *COPY      | 3    | copy record                               |
| *DELETE    | 4    | delete record                             |
| *DISPLAY   | 5    | display record                            |
| *PRINT     | 6    | print record                              |
| *COPYEXT   | 9    | copy record to extern file                |
| *CMD       | ...  | execute short command                     |
| *KEY       | -/-  | Select order by key sequence              |
| *MRKCOL    | -/-  | mark column                               |
| *PINCOL    | -/-  | pin column                                |
| *RRN       | -/-  | Select order by record number sequence    |
| *TBLPAPOFF | -/-  | disable multi colour line representation  |
| *TBLPAPON  | -/-  | enable multi colour line representation   |
| *UNMRKCOL  | -/-  | unmark column                             |
| *UNPINCOL  | -/-  | release pinned column                     |



12.3.2 Select Record Format, \*PEEK12

| Function  | Default | Description   |
|-----------|---------|---|
| *ENTER    | ENTER   | enter   |
| *EXIT     | F3      | exit program  |
| *REFRESH  | F5      | refresh screen  |
| *CANCEL   | F12     | cancel  |
| *MOREKEYS | F24     | more keys   |
| *PAGEUP   | PgUp    | scroll up<br><i>(can not be changed by the user!)</i>   |
| *PAGEDOWN | PgDn    | scroll down<br><i>(can not be changed by the user!)</i> |

12.3.3 Display Record, \*PEEK14

| Function  | Default | Description  |
|-----------|---------|--|
| *ENTER    | ENTER   | enter  |
| *EXIT     | F3      | exit program   |
| *REFRESH  | F5      | refresh screen   |
| *HEADLINE | F7      | toggle headline  |
| *HEXEDIT  | F9      | hex-editor (display mode)  |
| *STREDIT  | F10     | text-editor (display mode)   |
| *CANCEL   | F12     | cancel   |
| *TOP      | F17     | goto top of file   |
| *BOT      | F18     | goto botton of file  |
| *PRINT    | F21     | print record   |
| *YESTOALL | F22     | yes to all selected records<br><i>(only available with some functions, e.g. „LÖSCHEN“)</i> |
| *MOREKEYS | F24     | more keys  |
| *PAGEUP   | PgUp    | scroll up<br><i>(can not be changed by the user!)</i>                                      |
| *PAGEDOWN | PgDn    | scroll down<br><i>(can not be changed by the user!)</i>                                    |

12.3.4 Search Engine, \*PEEK17

| Function  | Default | Description    |
|-----------|---------|----------------|
| *ENTER    | ENTER   | enter          |
| *EXIT     | F3      | exit program   |
| *PROMPT   | F4      | prompt         |
| *REFRESH  | F5      | refresh screen |
| *CANCEL   | F12     | cancel         |
| *MOREKEYS | F24     | more keys      |

12.3.5 Colour, \*PEEK24

| Function   | Default | Description         |
|------------|---------|---------------------|
| *ENTER     | ENTER   | enter               |
| *SAVE_EXIT | F3      | Save & exit program |
| *REFRESH   | F5      | refresh screen      |
| *CANCEL    | F12     | cancel              |
| *MOREKEYS  | F24     | more keys           |
| *EXIT      | -/-     | exit program        |

12.3.6 Select Colour, \*PEEK25

| Function  | Default | Description    |
|-----------|---------|----------------|
| *ENTER    | ENTER   | enter          |
| *EXIT     | F3      | exit program   |
| *REFRESH  | F5      | refresh screen |
| *CANCEL   | F12     | cancel         |
| *MOREKEYS | F24     | more keys      |

12.3.7 Target File, \*PEEK26

| Function  | Default | Description    |
|-----------|---------|----------------|
| *ENTER    | ENTER   | enter          |
| *EXIT     | F3      | exit program   |
| *REFRESH  | F5      | refresh screen |
| *CANCEL   | F12     | cancel         |
| *MOREKEYS | F24     | more keys      |

12.3.8 Layout, \*PEEK34

| Function   | Default | Description         |
|------------|---------|---------------------|
| *NONE      | ''      | no action           |
| *ENTER     | ENTER   | enter               |
| *SAVE_EXIT | F3      | Save & exit program |
| *REFRESH   | F5      | refresh screen      |
| *FLOATKEYS | F11     | float keys to top   |
| *CANCEL    | F12     | cancel              |
| *SERACH    | F16     | search              |
| *TOP       | F17     | goto top of file    |
| *BOT       | F18     | goto botton of file |
| *MOREKEYS  | F24     | more keys           |
| *PAGEUP    | PgUp    | scroll up           |

|           |      |   |
|-----------|------|---|
| *PAGEDOWN | PgDn | (can not be changed by the user!)<br>scroll down  |
| *EXIT     | -/-  | (can not be changed by the user!)<br>exit program |

### 12.3.9 Prompt/Autoprompt: Fieldname, \*PEEK37

| Function  | Default | Description                                      |
|-----------|---------|--|
| *NONE     | ' '     | no action  |
| *ENTER    | ENTER   | enter  |
| *EXIT     | F3      | exit program                                     |
| *REFRESH  | F5      | refresh screen                                   |
| *CANCEL   | F12     | cancel   |
| *SERACH   | F16     | search   |
| *TOP      | F17     | goto top of file                                 |
| *BOT      | F18     | goto botton of file                              |
| *MOREOPT  | F23     | more options                                     |
| *MOREKEYS | F24     | more keys  |
| *PAGEUP   | PgUp    | scroll up  |
| *PAGEDOWN | PgDn    | scroll down<br>(can not be changed by the user!) |
| *SELECT   | 1       | select subfile record                            |

### 12.3.10 Display Database Relations, \*PEEK40

| Function  | Default | Description                                      |
|-----------|---------|--|
| *ENTER    | ENTER   | enter  |
| *EXIT     | F3      | exit program                                     |
| *REFRESH  | F5      | refresh screen                                   |
| *CANCEL   | F12     | cancel   |
| *SERACH   | F16     | search   |
| *TOP      | F17     | goto top of file                                 |
| *BOT      | F18     | goto botton of file                              |
| *MOREOPT  | F23     | more options                                     |
| *MOREKEYS | F24     | more keys  |
| *PAGEUP   | PgUp    | scroll up  |
| *PAGEDOWN | PgDn    | scroll down<br>(can not be changed by the user!) |
| *SELECT   | 1       | select subfile record                            |

12.3.11 Hex-Editor, \*PEEK45

| Function  | Default | Description          |
|-----------|---------|----------------------|
| *ENTER    | ENTER   | enter                |
| *EXIT     | F3      | exit program         |
| *REFRESH  | F5      | refresh screen       |
| *TGLINPUT | F7      | toggle input mode    |
| *CANCEL   | F12     | cancel               |
| *FIRSTPOS | F17     | goto first position  |
| *LASTPOS  | F18     | goto last position   |
| *LEFT     | F19     | move screen backward |
| *RIGHT    | F20     | move screen forward  |
| *MOREKEYS | F24     | more keys            |

12.3.12 Prompt: Select Member, \*PEEK47

| Function  | Default | Description   |
|-----------|---------|---|
| *NONE     | ' '     | no action   |
| *ENTER    | ENTER   | enter   |
| *EXIT     | F3      | exit program  |
| *REFRESH  | F5      | refresh screen  |
| *CANCEL   | F12     | cancel  |
| *SEARCH   | F16     | search  |
| *TOP      | F17     | goto top of file  |
| *BOT      | F18     | goto botton of file                                     |
| *MOREOPT  | F23     | more options  |
| *MOREKEYS | F24     | more keys   |
| *PAGEUP   | PgUp    | scroll up<br><i>(can not be changed by the user!)</i>   |
| *PAGEDOWN | PgDn    | scroll down<br><i>(can not be changed by the user!)</i> |
| *SELECT   | 1       | select subfile record                                   |

12.3.13 SQL Selection, \*PEEK48

| Function   | Default | Description                              |
|------------|---------|--|
| *ENTER     | ENTER   | enter                                    |
| *EXIT      | F3      | exit program                             |
| *PROMPT    | F4      | prompt                                   |
| *REFRESH   | F5      | refresh screen                           |
| *DSPDBR    | F9      | display & select database relation (key) |
| *INSKEYFLD | F11     | insert key fields                        |
| *CANCEL    | F12     | cancel                                   |

\*MOREKEYS          F24          more keys

#### 12.3.14 About, \*PEEK49

| Function  | Default | Description    |
|-----------|---------|----------------|
| *ENTER    | ENTER   | enter          |
| *EXIT     | F3      | exit program   |
| *REFRESH  | F5      | refresh screen |
| *CANCEL   | F12     | cancel         |
| *MOREKEYS | F24     | more keys      |

#### 12.3.15 Pin-Columns (Dialog), \*PEEK50

| Programmfunktion | Std.Blg. | Bemerkung   |
|------------------|----------|---|
| *NONE            | ' '      | no action   |
| *ENTER           | ENTER    | enter   |
| *SAVE_EXIT       | F3       | Save & exit program                                     |
| *REFRESH         | F5       | refresh screen  |
| *CANCEL          | F12      | cancel  |
| *SEARCH          | F16      | search  |
| *TOP             | F17      | goto top of file  |
| *BOT             | F18      | goto botton of file                                     |
| *CLRALL          | F22      | clear all options                                       |
| *MOREKEYS        | F24      | more keys   |
| *PAGEUP          | PgUp     | scroll up<br><i>(can not be changed by the user!)</i>   |
| *PAGEDOWN        | PgDn     | scroll down<br><i>(can not be changed by the user!)</i> |
| *EXIT            | -/-      | exit program  |

#### 12.3.16 Create Program, \*PEEK52

| Function  | Default | Description    |
|-----------|---------|----------------|
| *ENTER    | ENTER   | enter          |
| *EXIT     | F3      | exit program   |
| *REFRESH  | F5      | refresh screen |
| *CANCEL   | F12     | cancel         |
| *MOREKEYS | F24     | more keys      |

12.3.17 Select Environment, \*PEEK56

| Function   | Default | Description   |
|------------|---------|---|
| *NONE      | ' '     | no action   |
| *ENTER     | ENTER   | enter   |
| *EXIT      | F3      | exit program  |
| *REFRESH   | F5      | refresh screen  |
| *CANCEL    | F12     | cancel  |
| *SEARCH    | F16     | search  |
| *TOP       | F17     | goto top of file  |
| *BOT       | F18     | goto botton of file                                     |
| *MOREOPT   | F23     | more options  |
| *MOREKEYS  | F24     | more keys   |
| *PAGEUP    | PgUp    | scroll up<br><i>(can not be changed by the user!)</i>   |
| *PAGEDOWN  | PgDn    | scroll down<br><i>(can not be changed by the user!)</i> |
| *SLCENV    | 1       | select environment to load/save/delete (file & layout)  |
| *SLCLAYOUT | 2       | select layout to load                                   |

12.3.18 Delete Environment, \*PEEK57

| Function  | Default | Description                       |
|-----------|---------|-----------------------------------|
| *EXIT     | F3      | exit program                      |
| *DELETE   | F9      | delete environment (confirmation) |
| *CANCEL   | F12     | cancel                            |
| *MOREKEYS | F24     | more keys                         |

12.3.19 Message box, \*PEEK59

| Function | Default | Description   |
|----------|---------|---------------|
| *ENTER   | OK      | OK button     |
| *F03     | NO      | NO button     |
| *F09     | YES     | YES button    |
| *F12     | CANCEL  | CANCEL button |

12.3.20 Text-Editor, \*PEEK64

| Function | Default | Description    |
|----------|---------|----------------|
| *ENTER   | ENTER   | enter          |
| *EXIT    | F3      | exit program   |
| *REFRESH | F5      | refresh screen |

|           |     |           |
|-----------|-----|-----------|
| *CANCEL   | F12 | cancel    |
| *MOREKEYS | F24 | more keys |

### 12.3.21 Prompt: Select Subfile Option, \*PEEK68

| Programmfunktion | Std.Blg. | Bemerkung   |
|------------------|----------|---|
| *NONE            | ' '      | no action   |
| *ENTER           | ENTER    | enter   |
| *EXIT            | F3       | exit program  |
| *REFRESH         | F5       | refresh screen  |
| *CANCEL          | F12      | cancel  |
| *TOP             | F17      | goto top of file  |
| *BOT             | F18      | goto botton of file                                     |
| *MOREOPT         | F23      | more options  |
| *MOREKEYS        | F24      | more keys   |
| *PAGEUP          | PgUp     | scroll up<br><i>(can not be changed by the user!)</i>   |
| *PAGEDOWN        | PgDn     | scroll down<br><i>(can not be changed by the user!)</i> |
| *SLCENV          | 1        | select option   |

### 12.3.22 Prompt: Select File, \*PEEK69

| Function  | Default | Description   |
|-----------|---------|---|
| *NONE     | ' '     | no action   |
| *ENTER    | ENTER   | enter   |
| *EXIT     | F3      | exit program  |
| *REFRESH  | F5      | refresh screen  |
| *CANCEL   | F12     | cancel  |
| *SEARCH   | F16     | search  |
| *TOP      | F17     | goto top of file  |
| *BOT      | F18     | goto botton of file                                     |
| *MOREOPT  | F23     | more options  |
| *MOREKEYS | F24     | more keys   |
| *PAGEUP   | PgUp    | scroll up<br><i>(can not be changed by the user!)</i>   |
| *PAGEDOWN | PgDn    | scroll down<br><i>(can not be changed by the user!)</i> |
| *SELECT   | 1       | select subfile record                                   |

12.3.23 Update Programs, \*Pxxxxxxxx

| Function   | Default | Description                  |
|------------|---------|------------------------------|
| *ENTER     | ENTER   | enter                        |
| *EXIT      | F3      | exit program                 |
| *REFRESH   | F5      | refresh screen               |
| *TGLLCASE  | F6      | toggle upper/lower case mode |
| *HEADLINE  | F7      | toggle headline              |
| *TGLNULL   | F8      | toggle null indicator        |
| *HEXEDIT   | F9      | hex-editor                   |
| *STREDIT   | F10     | text-editor                  |
| *CANCEL    | F12     | cancel                       |
| *TGLRCDLCK | F13     | toggle record lock           |
| *TOP       | F17     | goto top of file             |
| *BOT       | F18     | goto bottom of file          |
| *MOREKEYS  | F24     | more keys                    |
| *PAGEUP    | PgUp    | scroll up                    |
| *PAGEDOWN  | PgDn    | scroll down                  |
| *LOWERCASE | -/-     | lower case mode              |
| *UPPERCASE | -/-     | upper case mode              |



12.3.24 Peek/400 Control Keys, \*PGM

The user settings files holds a lot of parameters that allow you to customize **Peek/400** to meet your requirements. This chapter describes the values in section \*PGM of the user settings file.

Every end of a record in this section must be marked with a ">" (x'8B').

12.3.24.1 \*ACCESSKEY (SET0003)

| Representation of the key of a file in the main screen of <b>Peek/400</b> |           |                      |  |
|---|-----------|----------------------|--|
| Position  | Data type | Parameter            | Description/Special Values                             |
| 1   | 1A        | Minus sign (-)       | Sign to indicate a negative value                      |
| 2   | 1A        | Plus sign (+)        | Sign to indicate a positive value                      |
| 3   | 1A        | Decimal point (.)    | Sign to represent the decimal point                    |
| 4   | 1A (bool) | Show minus/plus sign | 1=Yes; 0=No  |
| 5   | 1A        | Delimiter (;)        | Sign that is been placed between the fields of the key |

12.3.24.2 \*CVTCHR (SET0006)

| Replacement character for characters below x'40' and equal x'FF' |           |                           |   |
|--|-----------|---------------------------|---|
| Position   | Data type | Parameter                 | Description/Special Values  |
| 1  | 1A        | Replacement character (÷) | Character that will be shown if there are non-displayable characters in the records (below x'40' and equal x'FF') |

12.3.24.3 \*CRTPGM (SET0012)

| Defaults for the program generator |           |                                      |                            |
|------------------------------------|-----------|--------------------------------------|----------------------------|
| Position                           | Data type | Parameter                            | Description/Special Values |
| 1                                  | 1A (bool) | Allowed to use lower case characters | 1=Yes; 0=No                |
| 2                                  | 1A (bool) | Default is lower case                | 1=Yes; 0=No                |

|   |           |                     |             |
|---|-----------|---------------------|-------------|
| 3 | 1A (bool) | Lock record on read | 1=Yes; 0=No |
|---|-----------|---------------------|-------------|

12.3.24.4 \*DSPATR (SET0001)

| Settings for the representation of the subfile (main screen) |           |   |   |
|--|-----------|---|---|
| Position   | Data type | Parameter   | Description/Special Values                    |
| 1  | 1A        | Screen mode 80/132 characters                       | 1=80-characters; 0=132-characters             |
| 2  | 1A        | Colour: normal colour                               | Hexadecimal colour attribute                  |
| 3  | 1A        | Colour: marked columns                              | Hexadecimal colour attribute                  |
| 4  | 1A        | Colour: pinned rows/columns                         | Hexadecimal colour attribute                  |
| 5  | 1A        | Colour: Headline                                    | Hexadecimal colour attribute                  |
| 6  | 1A        | Colour: record found (search engine)                | Hexadecimal colour attribute                  |
| 7  | 1A        | Colour: underlined (search engine)                  | Hexadecimal colour attribute                  |
| 8  | 1A        | Colour: reverse (search engine)                     | Hexadecimal colour attribute                  |
| 9-18   | 10A       | Type of headline                                    | *FIELDNAME/*FIELDTEXT/*FIELDTYPE              |
| 19   | 1A        | Colour: alternating line colour                     | Hexadecimal colour attribute                  |
| 20   | 1A        | Use alternating line colours                        | 1=Yes; 0=No                                   |
| 21   | 1A        | Use editcode with sign instead of original editcode | 1=Yes; 0=No                                   |
| 22   | 1A        | Colour: key fields                                  | Hexadecimal colour attribute                  |
| 23-32  | 10A       | Aktive screen mode                                  | *DSPNRM     normal<br>*DSPHEX     hexadecimal |
| 33   | 1A        | Display exceptions with column width                | 1=Yes; 0=No                                   |
| 34   | 1A        | Colour: exceptions column width                     | Hexadecimal colour attribute                  |

12.3.24.5 \*DFTDSPMDE (SET0011)

|                      |
|----------------------|
| Default display mode |
|----------------------|

| Position | Data type | Parameter           | Description/Special Values            |
|----------|-----------|---------------------|---------------------------------------|
| 1-10     | 10A       | Default screen mode | *DSPNRM normal<br>*DSPHEX hexadecimal |

12.3.24.6 \*ENVFILE (SET0015)

| File to save environments |           |                            |  |
|---------------------------|-----------|----------------------------|--|
| Position                  | Data type | Parameter                  | Description/Special Values                                   |
| 1-10                      | 10A       | File                       | *NONE Keine Datei  |
| 11-20                     | 10A       | Library                    | *NONE keine Bibliothek<br>*PRDLIB <b>Peek/400</b> Prod.Bibl. |
| 21                        | 1A (bool) | Allowed to change the file | 1=Yes; 0=No  |
| 22                        | 1A (bool) | Function activated         | 1=Yes; 0=No  |

12.3.24.7 \*FLOATKEYS (SET0009)

| Automatically float key fields to top |           |                   |                            |
|---------------------------------------|-----------|-------------------|----------------------------|
| Position                              | Data type | Parameter         | Description/Special Values |
| 1                                     | 1A (bool) | Float keys to top | 1=Yes; 0=No                |

12.3.24.8 \*LANGUAGE (SET0004)

| Current user language |           |           |                            |
|-----------------------|-----------|-----------|----------------------------|
| Position              | Data type | Parameter | Description/Special Values |
| 1-3                   | 3A        | Language  | GER German<br>ENG English  |

12.3.24.9 \*PROMPT (SET0008)

| Prompt function |           |  |                            |
|-----------------|-----------|--|----------------------------|
| Position        | Data type | Parameter                                  | Description/Special Values |
| 1               | 1A        | Character to invoke prompt function        | Every character possible   |
| 2               | 1A (bool) | Display prompt fields with an other colour | 1=Yes; 0=No                |

12.3.24.10 \*PRVFILE (SET0014)

| Last specified file at <b>Peek/400</b> command |           |           |                            |
|--|-----------|-----------|----------------------------|
| Position                                       | Data type | Parameter | Description/Special Values |
| 1-10   | 10A       | File      |                            |
| 11-20  | 10A       | Library   |                            |
| 21-30  | 10A       | Member    |                            |

12.3.24.11 \*SCROLL (SET0010)

| Settings for horizontal field scroll mode |           |                              |   |
|---|-----------|------------------------------|---|
| Position                                  | Data type | Parameter                    | Description/Special Values  |
| 1-10                                      | 10A       | Horizontal field scroll mode | *BOTH      both directions<br>*LEFT      left only<br>*RIGHT     right only<br>*NONE      do not scroll |

12.3.24.12 \*SEARCH (SET0002)

| Settings for search engine |           |  |                            |
|----------------------------|-----------|--|----------------------------|
| Position                   | Data type | Parameter  | Description/Special Values |
| 1                          | 1A        | Wildcard (%)                                     | Every character possible   |
| 2-6                        | 5S 0      | Number of records to search sequentially (10000) |                            |

12.3.24.13 \*SECATRDFT (SET0013)

| Default security attributes (may be overridden at command level or by EXIT01) |           |  |                            |
|---|-----------|--|----------------------------|
| Position  | Data type | Parameter  | Description/Special Values |
| 1   | 1A (bool) | Allowed to change the library<br>(main screen of <b>Peek/400</b> )           | 1=Yes; 0=No                |
| 2   | 1A (bool) | Allowed to change the file<br>(main screen of <b>Peek/400</b> )              | 1=Yes; 0=No                |
| 3   | 1A (bool) | Allowed to change the member<br>(main screen of <b>Peek/400</b> )            | 1=Yes; 0=No                |
| 4   | 1A (bool) | Allowed to add/change/delete<br>records<br>(main screen of <b>Peek/400</b> ) | 1=Yes; 0=No                |
| 5   | 1A (bool) | Allowed to open a file <b>Peek/400</b>                                       | 1=Yes; 0=No                |

12.3.24.14 \*SPLASH (SET0005)

| Mode of splash screen |           |                                |                            |
|-----------------------|-----------|--------------------------------|----------------------------|
| Position              | Data type | Parameter                      | Description/Special Values |
| 1                     | 1A (bool) | Display splash screen at start | 1=Yes; 0=No                |

12.3.24.15 \*VERSION (SET0007)

| Version number |           |              |                            |
|----------------|-----------|--------------|----------------------------|
| Position       | Data type | Parameter    | Description/Special Values |
| 1-2            | 2A        | Version      |                            |
| 3-4            | 2A        | Release      |                            |
| 5-6            | 2A        | Modification |                            |

## 13 Tips & Tricks

### 13.1 Peek/400 and end-user!?

„Never!“ – That will cause big trouble!

Keep calm and make use of the possibilities of **Peek/400**. Of course you can enable an end-user to work with **Peek/400** but you may prevent him from:

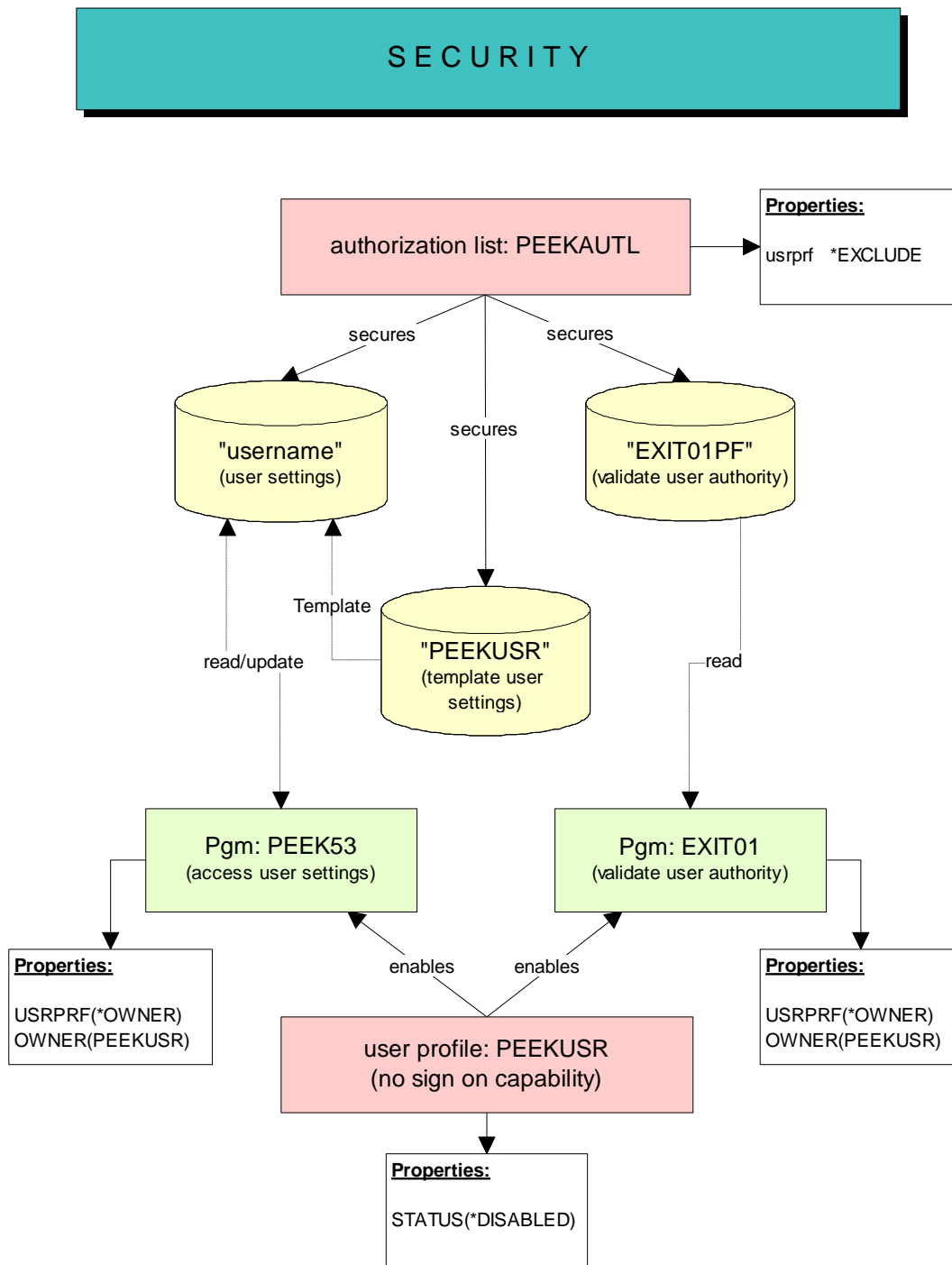
- changing records
- copying records
- deleting records

Just open his configuration file and delete the following entries:

| Function | Default | Description                 |
|----------|---------|-----------------------------|
| *ADD     | F6      | add record                  |
| *CHANGE  | 2       | change record               |
| *COPY    | 3       | copy record                 |
| *COPYEXT | 9       | copy record to another file |
| *DELETE  | 4       | delete record               |
| *CMDLINE | F21     | command line                |

Now you have to ensure that your users do get the rights back by semself, for example with UPDDTA.

You may implement the following concept of security to achieve this goal:



(Screen: Security *Peek/400*)

First you have to create an authorization list named „PEEKAUTL“ which is been used to secure that objects that are responsible for security. These objects are:

- all files with user settings
- PEEKUSR as the template file for the user settings

- all exit programs

All user that should not have access to that objects must be added to the authorization list with authority \*EXCLUDE. Obviously these users should not have \*ALLOBJ authority in their user profiles.

In order to allow **Peek/400** to access and modify these objects you can create a user profile named "PEEKUSR" with authority to access and modify the objects.

Last but not least you have to change the owner of all exit programs and of PEEK53 to „PEEKUSR“ and you must set the parameter USRPRF to \*OWNER.

Now all security relevant objects just can be accessed and modified by the exit programs and by PEEK53 but not by your users.

That´s all!

### **13.2 Create Your Own Default Keyboard Mapping**

Do you like to have your own default keyboard mapping of **Peek/400**?

Just open the file PEEKUSR placed in the program library of **Peek/400** and change the entries.

PEEKUSR is the default configuration file for every new user of **Peek/400**.

### **13.3 Your Own Language for Peek/400**

Create your own language definition file for **Peek/400**.

To do so you have to create a copy of the German or English language definition file and to translate the entries there.

Try the following way to create a Swedish language definition file:

```
CRTDUPOBJ      OBJ(PEEKENG)
                FROMLIB(PEEK)
                OBJTYPE(*MSGF)
                TOLIB(*FROMLIB)
                NEWOBJ(PEEKSV)E)
```

Translate the entries:

```
WRKMSGD        MSGID(*FIRST)
                MSGF(PEEK/PEEKSV)E)
```

Ready!



Of course I appreciate any new language definition file!

Start **Peek/400** with the new language:

```
PEEK          FILE(FileName)
              LANGUAGE(SVE)
```

## **14 EXIT-Programs**

### **14.1 User's Authority (EXIT01)**

Since the exit program EXIT01 is been executed before any new file is been opened by **Peek/400** you can verify if a particular user is allowed to open the file and if he is allowed to change records or to change the file, the library over the member in order to select another file or member.

The source code of EXIT01 has been shipped in source file QEXAMPLE and can be modified to meet your own requirements.

EXIT01 uses file EXIT01PF to verify a user's authority.

Further information about EXIT01 can be found in the source code. Unfortunately it is just available in German.

## **15 Help me!**

Please let me know if you think that there is something missing! A good piece of software can not be produced by a lonely programmer hacking on his keyboard!

## 16 History

| <b>Datum</b>      | <b>Beschreibung</b>  |
|-------------------|--|
| 29.09.1997        | Startpunkt der Programmierung von Peek/400   |
| 07.11.1997        | Fertigstellung der Version 1.0, Beta 1   |
| 11.11.1997        | Einbau der Umschaltmöglichkeit zwischen der Eingabe von Großbuchstaben und der Eingabe von Groß- und Kleinbuchstaben bei der Änderung von alphanumerischen Feldern.  |
| 13.11.1997        | Einbau Dialog zur Erfassung der Lizenzdaten<br>Einbau SPLASH-Screen  |
| 26.11.1997        | Anzeige von nicht darstellbaren Zeichen in der Subfile und im Einzelbild über Ersetzungszeichen.   |
| 27.11.1997        | Änderung von Datensätzen mit nicht darstellbaren Zeichen. Die Felder, die nicht darstellbare Zeichen enthalten, werden ausgeblendet. Sie sind somit <u>nicht</u> editierbar.   |
| <b>29.11.1997</b> | <b>Release der Version 1.0</b>   |
| 04.12.1997        | Kein Zugriff auf Dateien in der Bibliothek QTEMP möglich.<br>Korrektur der Befehlsdefinition des Befehls PEEK.<br><br>Fehler beim Löschvorgang von gesperrten Datensätzen.<br>Satzsperrern beim Löschvorgang abgefangen.   |
| 16.12.1997        | Funktion „Ganze Seite nach links verschieben“ eingebaut.<br>Program function: *PAGELEFT<br><br>Funktion „Ganze Seite nach rechts verschieben“ eingebaut.<br>Program function: *PAGERIGHT   |
| 17.12.1997        | Fehler in der Funktion „SUCHEN“ bei „LIKE/NLIKE“ in Verbindung mit „nicht case-sensitiver Suche“ korrigiert.   |
| 18.12.1997        | Wiederholungsfunktion für Subfileauswahlen eingebaut.<br>Programmfunktion: *REPEAT   |
| 19.12.1997        | Automatischer Abgleich der Benutzerdefinitionsdateien bei Versionswechsel eingebaut.<br><br>Editcodes ohne Vorzeichen (1, 2, 3, 4, Z) werden in die entsprechenden Editcodes mit Vorzeichen konvertiert.<br><br>Funktion für Programmneuerstellung eingebaut.<br>Programmfunktion: *REBUILD<br><br>Funktion zum löschen aller gepinnter Zeilen eingebaut.<br>Programmfunktion: *CLRPINROW<br><br>Funktion zum löschen aller gepinnter Spalten eingebaut.<br>Programmfunktion: *CLRPINCOL |

|                   |  |
|-------------------|--|
| 30.12.1997        | Funktion zur Änderung des Layouts eingebaut.<br>Programmfunktion: *LAYOUT<br><br>Farbliches hervorheben der Schlüsselfelder in der Überschriftenzeile  |
| 26.01.1998        | Eingabe negativer Werte und Werte mit Nachkommastellen innerhalb der Suchfunktion ermöglicht.  |
| 29.01.1998        | Verarbeiten von Zeit-, Datums- und Zeitstempelfeldern im Schlüssel der Datei. Fehlerprüfung bei der Eingabe des Aufsetzschlüssels bei diesen Feldtypen.  |
| 16.02.1998        | Auswahl von Feldnamen über Subfile (Prompt-/Autopromptfunktion)  |
| 27.02.1998        | Anzeigen von Dateien, die nicht aktualisiert werden können, z.B.: <ul style="list-style-type: none"> <li>• JOIN-Dateien</li> <li>• Dateien mit referenzieller Integrität <u>ohne</u> Journalisierung</li> </ul>                            |
| 06.03.1998        | Korrektur eines Fehlers in der Generierungsfunktion in Bezug auf fremde Codepages  |
| <b>15.03.1998</b> | <b>Release der Version 1.1</b>   |
| 18.03.1998        | Programmabbruch nach *REBUILD abgefangen   |
| 21/22.03.1998     | Anzeige der Datenbankrelationen  |
| 04.04.1998        | Fehler bei der Erstellung des Update-Programms behoben.<br>In einigen Fällen konnte die Datei PEEKFLD nicht gefunden werden.   |
| 14.04.1998        | Funktion der Kurzauswahlen eingebaut.  |
| 21.04.1998        | Fehler bei der Funktion *REFRESH in PEEK14 behoben. (Anzeigen, Ext. Kopieren, Löschen)<br><br>*BOT und *TOP in *PXXXXXXXXX-Programme eingebaut<br><br>Fehler bei der Konvertierung nicht darstellbarer Zeichen im Schlüsselbegriff behoben |
| 28.04.1998        | Verzicht auf die OUTFILE bei der Ermittlung der Schlüsselfeldinformationen, jetzt über API   |
| 27.05.1998        | Befehl TREE erstellt   |
| 28.05.1998        | Umschalten der Sortierfolge  |
| <b>01.06.1998</b> | <b>Release der Version 1.2</b>   |
| 18.07.1998        | Korrektur Fehler in der Darstellung von Editcode X. Wird jetzt wie Editcode Z behandelt.<br><br>Korrektur F11 im 80-Zeichenmodus. F11 war im Displayfile nicht aktiv.  |
| 17.08.1998        | Hex-Editor auf Feldebene bei der Auswahl 2 (Ändern Datensatz) eingebaut.   |
| 27.09.1998        | Fehler beim Generieren der REFFLD-Zeile in der Bildschirmdatei.  |
| 06.10.1998        | Fehler im Hex-Editor. Feldänderungen im „Datensatz Ändern“ Bildschirm wurden nicht in den  |

|                   |  |
|-------------------|--|
|                   | Hex-Editor übernommen.   |
| 08.10.1998        | Fehler beim umsordieren der Felder in der „Layout“ Funktion. Das Bildschirmfeld „Editcode“ wurde nicht richtig initialisiert.  |
| <b>11.10.1998</b> | <b>Release der Version 1.3</b>   |
| 11.12.1998        | Umbenennen der externen Dateifelder in interne Feldnamen in den generierten Programmen   |
| 14.12.1998        | F4-Funktion für Liste der Teildateien  |
| 15.12.1998        | Korrektur Textanzeige „mit Commitsteuerung“/„ohne Commitsteuerung“ in den generierten Programmen   |
| 21.12.1998        | Anzeigen der Anzahl Teildateien im Hauptbildschirm   |
| 19.01.1998        | Hex-Anzeige über F9 bei der Funktion „ANZEIGEN DATENSATZ“  |
| <b>02.02.1999</b> | <b>Release der Version 1.4</b>   |
| 10.02.1999        | Verbesserte Unterstützung von Datums- und Zeitfeldern in den generierten Programmen  |
| 11.02.1999        | Bei einem Fehler in den generierten Programmen (beispielsweise „Doppelter Schlüssel“) werden die Bildschirmfeldinhalte nicht mehr mit den Dateifeldinhalten überschrieben.   |
|                   | Ab sofort ist eine neue Funktion „*PINCOLDLG“ im Hauptbildschirm (F15) verfügbar. Hinter dieser Funktion verbirgt sich ein Subfiledialog, der es ermöglicht, Felder (Spalten) durch einfache Selektion (Eingabe Folgenummer) zu pinnen.<br>Die ehemalige Funktion von F15 (*USERSETG) wurde auf die Subfileauswahl „ST“ verlegt, |
|                   | Bildschirm „Über Peek/400“ eingebaut.<br>Programmfunktion: „A“   |
| 12.02.1999        | Die Verarbeitungspriorität der Bildschirmeingaben im Hauptbildschirm wurde geändert. Datenfreigabe mit Änderungen im Kopfteil des Bildschirms (beispielsweise Änderung der Datei) werden vor den Subfileeingaben bearbeitet.   |
|                   | Im Bildschirm für die Anzeige der Einzelsätze sind nun die Funktionen *TOP und *BOT verfügbar.   |
|                   | Im Bildschirm für zur Auswahl eines Feldes aus dem Datensatz (Bedienführung) sind nun die Funktionen *TOP und *BOT verfügbar.  |
|                   | Im Bildschirm zur Anzeige des Layouts sind nun die Funktionen *TOP und *BOT verfügbar.   |
|                   | In den generierten Programmen, sowie im Bildschirm zur Anzeige eines Einzelsatzes, werden die Schlüsselfelder mit einem „>“ markiert.  |
|                   | Im Bildschirm „Extern Kopieren“ werden die Felder „Datei, Bibliothek und Teildatei“ nicht mehr gelöscht, sofern sich die geöffnete Datei nicht geändert hat.<br>Die Werte für „Sätze ersetzen“ und „Datei erstellen“ werden auf die Standardwerte „*ADD“ und „*NO“ zurückgesetzt.  |
| 16.02.1999        | Rechts/Links verschieben der Anzeige innerhalb eines überlangen Feldes.  |

|                   |  |
|-------------------|--|
| 17.02.1999        | Hexadezimaler Anzeigemodus im Hauptbildschirm.   |
| <b>06.03.1999</b> | <b>Release der Version 1.5</b>   |
| 10.03.1999        | Probleme bei Positionierung der Subfile bei der Eingabe von Teilschlüsseln in Datums-, Zeit- und Zeitstempelfeldern gelöst.  |
| 16.03.1999        | Auswahl der Datensätze über SQL.<br>Programmfunktion: *SQL   |
| 18.03.1999        | Anzeige der Schlüsselfelder in den generierten Programmen korrigiert.  |
| 19.03.1999        | Defaultangaben für den Programmgenerator eingebaut.  |
| 23.03.1999        | Anzeige und Auswahl Datenbankrelationen in SQL-Auswahl zur Auswahl eines Schlüssels eingebaut.                               |
| <b>02.04.1999</b> | <b>Release der Version 2.0</b>   |
| 27.04.1999        | Freigeben/Schützen der Felder "Datei", "Bibliothek" und "Teildatei über Startparameter (ALWCHGLIB, ALWCHGFILE, ALWCHGMBR)    |
| 28.04.1999        | Einschränken des Bearbeitungsmodus über Startparameter (UPDMOD(*YES/*NO)   |
|                   | Prüfen Benutzerprofil auf Parameter LMTCPB für Aktion *CMDLINE   |
| 30.04.1999        | Bugfix bei den Generierungsangaben CASE und ALWLC. Die entsprechenden Werte wurden falsch interpretiert.                     |
| 05.04.1999        | Sonderwert *PRV im Befehl PEEK für Schlüsselwort FILE.   |
| 06.05.1999        | Anzeige der physischen Datei in den Datenbankrelationen, wenn keine logischen Dateien vorhanden sind.                        |
|                   | Beibehalten der gepinnten Zeilen und Spalten beim Umschalten der Sortierfolge.   |
| <b>08.06.1999</b> | <b>Release der Version 2.1</b>   |
| 24.06.1999        | Bei einer Reduzierung der Spaltenbreite über die Funktion *LAYOUT werden numerische Werte jetzt rechtsbündig angezeigt.      |
| <b>24.06.1999</b> | <b>Release der Version 2.1.1</b>   |
| 21.07.1999        | Erweiterung:<br>Erstellen Serviceprogramm für allgemeine Funktionen. (Vorbereitung zur Verarbeitung Felder variabler Länge.) |
| 22.07.1999        | Erweiterung:<br>Unterstützung für Felder variabler Länge eingebaut.  |
| 22.07.1999        | Bugfix:<br>Synchronisation der Anzeige zwischen Aktualisierungs- und Anzeigeprogramm.  |
| 23.07.1999        | Bugfix   |

|            |  |
|------------|--|
|            | Ausführen von Kurzbefehlen. Übergabe ShortCmd an PEEK42 Parameterlänge zu kurz definiert   |
| 29.07.1999 | Erweiterung:<br>Hex-Editor: rechts/links verschieben mit F19/F20 (PEEK45).   |
| 06.08.1999 | Erweiterung:<br>PEEK59, generische Window zur Nachrichtenabfrage (msgbox) erstellt.  |
| 11.07.2000 | Bugfix:<br>Aktualisieren der Felder "File", "Library" und "Member" beim Drücken der F5-Taste (PEEK05).   |
| 18.07.2000 | Bugfix:<br>Löschen der Felder: Aufsetzschlüssel und rel. Satznummer beim Wechseln der Datei. (PEEK05).   |
| 19.07.2000 | Erweiterung:<br>F17/F18 (Anfang/Ende) eingebaut in Hex-Editor. (PEEK45).   |
| 26.07.2000 | Bugfix:<br>Teildateiliste bei Funktion SE war unvollständig. (PEEK56).   |
| 06.12.2000 | Erweiterung:<br>ALWCHGRCD(*NOKEY) eingebaut<br>(Befehl PEEK und div. Programme; Änderung in EXIT01PF und Erweiterung SET0013)  |
| 14.12.2000 | Bugfix:<br>Wenn eine Datei nur für Input geöffnet werden konnte, dann verursachten folgenden Funktionen einen Fehler:<br>- Pin Datensatz<br>- Kopieren Datensatz in ext. Datei<br>- Umschalten der Sortierfolge                        |
| 25.02.2001 | Erweiterung:<br>Verbesserte Unterstützung der Satzformatauswahl bei logischen Dateien. Es werden jetzt nur noch die Datensätze des betreffenden Satzformats angezeigt.<br>PEEK12 wurde auf die Verwendung von Msg-Variablen angepasst. |
| 11.03.2001 | Bugfix:<br>Satzsperrung für gepinnte Datensätze entfernt. Zugriff über FILE00 auf FILE04 geändert in PEEK05.PBPinRcd   |
| 09.04.2001 | Bugfix:<br>Case-sensitive Suchfunktion; PEEK17 korrigiert.   |
| 09.04.2001 | Erweiterung:<br>Vorbelegung des Parameters TOMBR() im Programm PEEK26 mit dem Namen der "von Teildatei".   |
| 09.04.2001 | Erweiterung:<br>Anzeige von Datensätzen von multi-member Dateien. (PEEK14)   |
| 09.04.2001 | Erweiterung:<br>Sortierung nach relativer Satznummer wird abgewiesen, wenn die Datei auf mehreren Teildateien basiert.   |



|                   |  |
|-------------------|--|
| 26.04.2002        | Bugfix:<br>Environments. PEEK54/PEEK55 Speichern/Laden der Pin-Tabellen in der Umgebungsdatei korrigiert.  |
| 26.04.2002        | Bugfix:<br>Satzaufbau. PEEK05 Löschen der Datei PEEKFLD wenn eine Datei geschlossen wird.  |
| 26.04.2002        | Erweiterung:<br>Environments. PEEK54/PEEK55 Abspeichern der geöffneten Datei. Auswahl zwischen *ENVIRONMENT oder *LAYOUT_ONLY eingebaut.                                       |
| 27.04.2002        | Bugfix:<br>Hex-Editor. Bei Feldern > 512 Byte wurden nur die ersten 512 Byte in den Satz zurück geschrieben.   |
| 29.04.2002        | Änderung/Bugfix:<br>Environments. PEEK54/PEEK55 Abspeichern der Umgebungsdaten benutzerunabhängig. Wechsel der Umgebungsdateibibliothek (PEEKENV) wurde nicht korrekt erkannt. |
| <b>04.05.2002</b> | <b>Release der Version 2.2</b>   |
| 23.05.2002        | Fehler bei der Behandlung von 2-Byte Binärwerten korrigiert.   |
| 20.10.2003        | Datentypen J, O, E zugelassen.   |
| <b>20.10.2003</b> | <b>Release der Version 2.2.1 (internes, nicht veröffentlichtes Release)</b>  |
| 11.02.2004        | Fehler bei der Generierung für Dateien mit „input only“ Felder korrigiert.   |
| 23.03.2004        | Unterstützung für 1-byte und 8-byte Integerfelder eingebaut.   |
| 01.04.2004        | Fehler in PEEK05 bei *HIVAL und *LOVAL Werten in Datums-, Zeit- und Zeitmarkenfeldern korrigiert.  |
| 01.04.2004        | Unterstützung für Zeitformate *HMS und *EUR, sowie für Datumsformat *EUR eingebaut.  |
| 28.04.2004        | Abbruch von PEEK05 bei Datensatzlängen > 4096 Zeichen korrigiert.  |
| 28.04.2004        | Unterstützung für Datensatzlängen bis 32766 Byte eingebaut.  |
|                   | <b>Release der Version 2.2.2</b>   |
|                   | Neue Ersatzvariable % + Feldname für Kurzauswahlen   |
|                   | Änderung der Lizenzierung auf Freeware.  |
| <b>21.09.2004</b> | <b>Release der Version 2.3.0</b>   |
|                   | Fehler in Funktion f_basedPF() korrigiert.   |
|                   | Fehler beim Öffnen einer SQL Auswahl korrigiert.   |
|                   | Ausgeben Fehlermeldung beim Pinnen eines Satzes, wenn die logische Datei auf mehreren physischen Teildateien basiert.  |

|                   |  |
|-------------------|--|
|                   | Überlesen leerer Subfileauswahlen.   |
|                   | <b>Release der Version 2.3.1 (internes, nicht veröffentlichtes Release)</b>                              |
| 09.02.2006        | Problem beim Generieren von Display Files korrigiert.  |
| <b>09.02.2006</b> | <b>Release der Version 2.3.2</b>   |
|                   | Einbau Fortschrittsbalken beim Erstellen der Update-Programme.   |
|                   | Fehler in Fehlermeldung bei falscher Eingabe Ja/Nein korrigiert.   |
|                   | Generieren Display File mit Edit Code 'P', wenn ein numerisches Feld keinen Edit Code hat.               |
|                   | Feldlänge DATA in PEEKUSR auf 256 Zeichen vergrößert.  |
|                   | „Index out of range“ Fehler in PEEK15 korrigiert.  |
|                   | <b>Release der Version 2.4.1 (internes, nicht veröffentlichtes Release)</b>                              |
|                   | Unterstützung für 310 und 2010 Felder eingebaut.   |
|                   | Verbesserte Positionierung des Cursors nach Feldauswahl (F4) bei SQL Auswahl.                            |
|                   | Programmabsturz bei Eingabe von 0 in „Feld-Nummer:“ in Programm PEEK05 korrigiert.                       |
|                   | Generierte Programme: Länge von „ShortCmd“ angepasst.  |
|                   | <b>Release der Version 2.4.2 (internes, nicht veröffentlichtes Release)</b>                              |
|                   | Fehler beim Verschieben der Anzeige nach rechts bei überlangen Feldern und gepinnten Spalten korrigiert. |
| <b>07.05.2008</b> | <b>Release der Version 3.0.0</b>   |
|                   | Abstellen generierter Quellen in QPEEKGEN anstelle QCOPYLE und QRPGLLE.                                  |
|                   | Unterstützung für NULL-fähige Felder eingebaut.  |
|                   | Verbesserter Hex-Editor.   |
|                   | Einstellung für Statusnachricht wurde bei Umwandlungsfehler im RPG Modul nicht wiederhergestellt.        |
|                   | Neuer Text-Editor für Felder bis 1024 Byte.  |
|                   | Ermittlung der Einstellungsdatei anhand des Gruppenprofils in Programm EXIT02 deaktiviert.               |
|                   | Beibehalten Modus für Eingabe in Klein-/Großbuchstaben der generierten Programme eingebaut.              |
|                   | Generierte Programme: Neue Auswahl: „Satz gesperrt einlesen“.  |
|                   | Generierte Programme: Ändern der Satzsperrung.   |
|                   | Umschalten Eingabe der Schlüsselfelder in PEEK05 in Kleinbuchstaben mit Auswahl „K“.                     |

|                   |   |
|-------------------|---|
|                   | Speichern/ Laden Modus der Schlüsselfelder (PEEK05) in der Arbeitsumgebung.   |
|                   | Fehler beim Laden der Arbeitsumgebung, Parameter ENVFILE() des Befehls PEEK korrigiert.   |
|                   | Generierte Programme: Abfrage „Trotzdem speichern“ bei zwischenzeitlicher Änderung des Datensatzes durch einen anderen Job.   |
| <b>12.08.2008</b> | <b>Release der Version 3.1.1</b>  |
|                   | Template für Update-Programme bzgl. Satzsperrung überarbeitet.  |
|                   | „Drucken Datensatz“ mit Auswahl ‚6‘ oder Funktionstaste F21 (im Anzeigeprogramm) eingebaut.   |
|                   | Kurzauswahlen erweitert, so dass das Datenformat der übergebenen Parameter angegeben werden kann.   |
|                   | Window zur Anzeige und Auswahl der zur Verfügung stehenden Subfileoptionen im Hauptprogramm PEEK05.   |
| <b>15.08.2008</b> | <b>Release der Version 3.1.2</b>  |
|                   | Fehler bei SQL Auswahl korrigiert.  |
|                   | Verbesserte Ausgabe der Fehlermeldungen bei der SQL Auswahl   |
| <b>22.08.2008</b> | <b>Release der Version 3.1.3</b>  |
|                   | Weiteren Fehler bei SQL Auswahl korrigiert.   |
| <b>04.09.2008</b> | <b>Release der Version 3.1.4</b>  |
|                   | Feldüberlauf in Feld \$\$Digt in Programm PEEK34 (Layout) korrigiert.   |
| <b>18.08.2009</b> | <b>Release der Version 3.1.6</b>  |
|                   | SETGT und SETLL Funktionen überarbeitet. Fehler korrigiert, der dazu führte, dass ans Ende der Datei positioniert wurde, wenn am Anfang der Datei F5 gedrückt und dann zwischen dem SETLL und dem READ der erste Satz gelöscht wurde. |
|                   | Fehler bei der Aufbereitung der Kurzbefehle korrigiert. Der Unterstrich war nicht in der Liste der gültigen Zeichen für Feldnamen.  |
|                   | Autom. ausführen von C_Enter in PEEK34 bei F3 (SAVE).   |
|                   | Vorbelegung für JIS Datums- und Zeitfeld eingebaut.   |
| <b>27.10.2009</b> | <b>Release der Version 3.2.1</b>  |
|                   | Auswahl des Edit Codes für Darstellung numerischer Daten in der Subfile geändert.   |
|                   | Erzeugen internen Schlüssel korrigiert für Fälle in denen der Schlüssel länger als die zur Verfügung stehende Eingabezeile ist.   |
| <b>27.10.2009</b> | <b>Release der Version 3.2.3</b>  |

|  |  |
|--|--|
|  | Fehler beim Aktualisieren der Subfile mit F5 korrigiert. Die Subfile wurde ans Ende positioniert, wenn zwischenzeitlich der erste Datensatz von einem anderen Job gelöscht wurde.  |
|  | Fehler bei der Aufbereitung der Kurzbefehle korrigiert. Der Unterstrich war nicht in der Liste der gültigen Zeichen für Feldnamen.   |
|  | Layout Editor (PEEK34): Automatisches ausführen von C_Enter bei SAVE (F3).   |
|  | Datensatzanzeige (PEEK16) und generierte Updateprogramme: Vorbelegung für JIS Datums- und Zeitfelder eingebaut.  |
|  | Unterstützung für Datentyp FLOAT eingebaut.  |
|  | Standardeditcode zur Aufbereitung numerischer Daten auf „L“ geändert. Einstellung über „PEEKUSR“:<br>*DSPATTR, Stelle 21 (SET_DspSgn):<br>0 = Keine Umsetzung des Edit Codes<br>1 = Altes Verhalten, 0=blanks<br>2 = Neues Verhalten, Edit Code 'L' (SET_editCode)<br>*DSPATTR, Stelle 33 (SET_editCode):<br>Edit Code, für SET_DspSgn=2 |
|  | Fehler beim Erzeugen des internen Aufsetzschlüssels korrigiert, sofern dieser länger als die Eingabezeile ist.   |
|  | Reihenfolge beim Öffnen der Dateien hFile00 – hFile03 geändert, um Probleme bei Dateien mit SHARE(*YES) zu vermeiden.  |
|  | <b>Release der Version 3.2.4 (internes, nicht veröffentlichtes Release)</b>  |
|  | Generische Dateiauswahl am Befehlsprompt.  |
|  | Fehler in PEEK63.CIO_setIWithRRN() korrigiert.   |
|  | Fehler in PEEK58.f_basedMbr() korrigiert. Join Dateien wurden nicht richtig erkannt.   |
|  | F4 für Dateiauswahl in der Anzeige der Datensätze (PEEK05).  |
|  | Neu: EXIT03 zur Bestimmung der Edit Codes in den generierten Update Programmen.  |
|  | Sortieren der Einträge nach Name in der Übersicht der logischen Dateien.   |
|  | Anzeige aller Schlüsselfelder in der Übersicht der logischen Dateien.  |
|  | <b>Release der Version 3.2.5 (internes, nicht veröffentlichtes Release)</b>  |
|  | Generische Dateiauswahl im Peek/400 Hauptbildschirm.   |
|  | Fehler im DDS Generator bei alternativen Feldnamen länger als 30 Zeichen korrigiert.   |
|  | <b>Release der Version 3.2.6 (internes, nicht veröffentlichtes Release)</b>  |
|  | Spanische Übersetzung durch Antón Vigo.  |

|                   |   |
|-------------------|---|
|                   | Erweiterung der Befehle PEEK und TREE um Parameter WHERE und ORDERBY.   |
|                   | Korrekte Anzeige der Anzahl der ausgewählten Datensätze bei Zugriffsart *SQL.   |
|                   | Neuer Befehl PEEKINIT zur Erstellung der Befehle PEEK und TREE in der gewünschten Sprache (GER, ENG, SPA)   |
| <b>05.11.2010</b> | <b>Release der Version 3.3.0</b>  |
|                   | PEEK63 neu erstellt um den in PEEK63C geänderten Funktionswert des Prototypen der Funktion C_RlsIck neu einzubinden.  |
| <b>28.05.2011</b> | <b>Release der Version 3.3.1</b>  |
|                   | Parameter SETTINGS hinzugefügt.   |
|                   | EXIT02 erweitert.   |
|                   | Ermitteln der zu verwendenden Benutzereinstellungen überarbeitet.   |
| <b>28.06.2011</b> | <b>Release der Version 3.3.2</b>  |
|                   | Aufbereitung des internen Aufsetzschlüssels für VARYING Felder korrigiert.  |
|                   | Fehler beim Löschen von Datensätzen aus einer logischen Datei korrigiert, wenn das Satzformat der logischen Datei anders benannt ist, als das Satzformat der physischen Datei.  |
|                   | Die am Befehlsprompt eingegebene Arbeitsumgebung wird ab sofort nicht mehr nur für das Laden der ersten Umgebung benutzt, sondern für die gesamte Programmlaufzeit beibehalten. |
|                   | Neuer Parameter ENVSAVE zur Steuerung, ob mit dem Verlassen des Programms die Arbeitsumgebung automatisch gespeichert werden soll.  |
|                   | Anzeige von GRAPHIC Felder, die eine CCSID haben und zur Speicherung von DBCS Daten dienen.   |
|                   | Italienische Übersetzung durch Marco Alberici.  |
| <b>04.08.2012</b> | <b>Release der Version 3.4.1</b>  |
|                   | Bugfix bei der Anzeige der Hex-Daten (F9) ausgehend von der Datensatzanzeige (PEEK14).  |
|                   | Neue Spaltenüberschrift (F7), bestehend aus dem Feldnamen und dem Datentyp.   |
| <b>10.08.2012</b> | <b>Release der Version 3.4.3</b>  |
|                   | Bugfix PEK04: Fehlenden Aufruf für Ereignis *DELETE eingebaut.  |
|                   | Bugfix PEEK05/PEEK14: Automatische Zeichenkonvertierung in Abhängigkeit der Job CSID beim Lesen der Daten ausgeschaltet. Wird jetzt per Hand konvertiert.                       |
|                   | Bugfix PEEK05: Anzeige der Satzformat-ID korrigiert.  |
|                   | Bugfix PEEK06: Verschleppen alter Anzeigewerte korrigiert.  |

|                   |   |
|-------------------|---|
|                   | Bugfix PEEK06: Berechnung der anzuzeigenden Länge bei GRAPHIC Feldern korrigiert.   |
|                   | Bugfix PEEK06: Aufbereiten der Überschriften hinsichtlich der CCSID korrigiert.   |
|                   | Bugfix PEEK15: Überschreiben der Alias-Namen korrigiert.  |
|                   | Bugfix PEEK15: Fehler im Hex-Editor bei Feldtypen A und G. (Feldlänge 0 an PEEK45 übergeben.)   |
|                   | Bugfix PEEK18: RNX1000 in Prozedur cvtToJobCcsid().   |
|                   | Neu: EXIT05 um Befehlstasten und Subfileauswahlen filtern, bzw. ändern zu können.   |
|                   | Neu: Parameter "Nur Layout laden" (ENVLAYOUT).  |
|                   | Neu: Anzeige "Anzahl Datensätze" auf Dateien mit weniger als 5000000 Datensätzen bei SQL Auswahl. Einstellbar über Schlüssel *SQLLMTCNT.          |
| <b>27.08.2015</b> | <b>Release der Version 3.5.0</b>  |
|                   | Falsche Aufbereitung der Satzfelder in PEEK14 bei logischen Dateien mit abweichendem Satzaufbau zur physischen Datei.                             |
| <b>19.12.2015</b> | <b>Release der Version 3.5.1 (internes Release)</b>   |
|                   | Endlosschleife aufgrund eines falschen Rückgabewerts bei einem IO Fehler in der Funktion CIO_readp() korrigiert.                                  |
|                   | Befehl TREE: "Pointer not set" Fehler korrigiert.   |
| <b>04.04.2015</b> | <b>Release der Version 3.5.2</b>  |
|                   | Problem beim Wechseln des Satzformats (Pmt_Fmt) behoben.  |
|                   | Programmfunktion *OK aufgrund einer falsch ausgelieferten PEEKUSR gleichgesetzt zu *ENTER. Ebenso *NO für *EXIT.                                  |
|                   | Von Marco Riva überarbeitete Italienische Übersetzung.  |
| <b>06.03.2017</b> | <b>Release der Version 3.5.3</b>  |
|                   | Fehler beim Anlegen einer neuen Datei für die Benutzereinstellungen korrigiert, so dass die Datei nun auch die erforderlichen Datensätze enthält. |
| <b>10.04.2019</b> | <b>Release der Version 3.5.4</b>  |
|                   |   |